



Foreign Material Exclusion

Product Guide

2022

**HEIGHT SAFETY.
SIMPLIFIED.**

guardianfall.com

Foreign Material Exclusion

Product Guide

2022

CONTENTS

FME Cabinets	003
FME Barriers & Covers	006
FME Caps & Plugs	011
Spring Clamp	023
Magnetic Sheeting	023
Floor Coverings	024
Large FME Sheeting & Covers	026
FME Barrier Identification	028

FME CABINETS



Keep everything at an arm's reach and ensure that it will actually be used with these FME cabinets. Eliminate the need for short cuts and bypassing FME procedures. The easy solution to quickly starting a new FME program, and a great way to supplement a seasoned one.

Available in many styles for all sorts of site specific applications.

Can come ready stocked or empty.

Call to customize.

General applications and locations where FME Cabinets are commonly used

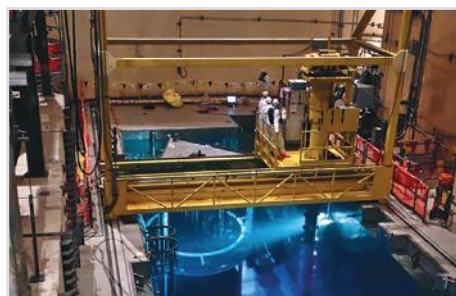
Warehouse



Instrumentation And Control



Turbine Deck



Refuel Floor



Electrical Shop

BASIC FME CABINET

FOREIGN MATERIAL EXCLUSION

PRODUCT CODE: BASIC SERIES

Features

- Contains a variety of the most common FME products
- Each model specifically tailored for the most common set-ups
- A popular option for new FME programs
- Contents available on request



BASIC

Prod. Code	Description	Dimensions	Colours
BASIC	Standard Basic FME Cabinet	36" w x 24" d x 78" h	● ● ● ●
BASICT	Basic Cabinet Training Setup	36" w x 24" d x 78" h	● ● ● ●
BASICWH	Basic Cabinet Warehouse Setup	36" w x 24" d x 78" h	● ● ● ●

AUXILIARY FME CABINET

FOREIGN MATERIAL EXCLUSION

PRODUCT CODE: AUX SERIES

Features

- Contains a variety of the most common FME products
- Each model specifically tailored for the most common set-ups
- A popular option for new FME programs
- Rolling casters for mobility
- Contents available on request



AUX1

Prod. Code	Description	Dimensions	Colours
AUX1	Auxiliary Cabinet Configuration 1	36" w x 24" d x 42" h	● ● ● ●
AUX2	Auxiliary Cabinet Configuration 2	36" w x 24" d x 42" h	● ● ● ●
AUXT	Auxiliary Cabinet Training Setup	36" w x 24" d x 42" h	● ● ● ●
AUXXL	Extra Width Auxiliary Cabinet	48" w x 24" d x 42" h	● ● ● ●
AUXXLT	Extra Width Auxiliary Cabinet Training Setup	48" w x 24" d x 42" h	● ● ● ●

SUPREME FME CABINET

FOREIGN MATERIAL EXCLUSION

PRODUCT CODE: SUPREME SERIES



Features

- Stocked with a massive number of FME Products
- Fork-lift pockets for transportation
- Great for high traffic FME zones
- Contents available on request

Prod. Code	Description	Dimensions	Colours
SUPREME	Standard Supreme FME Cabinet	60"w x 36"d x 78"h	● ● ● ●
SUPREMENPT	Supreme Cabinet NPT Setup	60"w x 36"d x 78"h	● ● ● ●
SUPREMEMAX	SUPREME w/Expanded Contents	60"w x 36"d x 78"h	● ● ● ●
SUPREMEMAXNPT	SUPREME NPT w/Expanded Contents	60"w x 36"d x 78"h	● ● ● ●
SUPREMEFLG	Supreme Cabinet Flange Setup	64"w x 38"d x 78"h	● ● ● ●
SUPREMEREF	Supreme Cabinet Refinery Setup	60"w x 36"d x 78"h	● ● ● ●

EXTREME FME CABINET

FOREIGN MATERIAL EXCLUSION

PRODUCT CODE: EXTREME SERIES



Features

- Cabinet - Heavy Duty Construction
12 Gauge Frame, Wider Cabinet allowing for additional and larger bins
- Larger capacity hanging door bins
- Stocked with a variety of our FME products:
Covers, Caps, Plugs, Stickers, Barrier Tape, Eyeglass Retainers, Vent Caps, Wrist Lanyards & Attachments, Pen Lanyards, and much more
- Call for a detailed itemized contents list

Prod. Code	Description	Dimensions	Colours
EXTREME	Standard Extreme Cabinet	52"w x 30"d x 78"h	● ● ● ●

FME BARRIERS & COVERS

Barriers are installed on any equipment as a means to prevent the entry of foreign material. They keep foreign material out of open components by physically blocking it.

FME covers, magnetic sheets, plastic caps and plugs are all commonly used FME barriers. The variety of styles available allow you to cover almost any piece of vulnerable equipment around almost any work task.

Even though we're known for carrying stock on many items, we also provide some of the most knowledgeable custom creations in the industry. If you don't see the style of cover you're looking for in this section, please give us a call and we'll create a custom solution for your needs.

Barrier Applications

- Turbine Maintenance
- Refuelling Outages
- Component Storage (Warehousing)
- Electrical and I&C
- Air Handling Units (Duct Work)
- S/G (Primary and Secondary)
- Manway Openings, Heat Exchangers, Condensers, Miscellaneous Openings
- Piping, Tubing, Flanges
- MSRs, Dry Wells, Suppression Pools
- Large Vessels
- Valves
- Diesel Generators
- Drains
- Irregular openings



FME COVERS

FOREIGN MATERIAL EXCLUSION

PRODUCT CODE: CBFR SERIES

CBFR2, CBFR6,
CBFR10, and
CBFR24



Features

- Round bottom for custom fit
- Adjustable drawstring with metal-free cord lock
- NFPA-701 fire retardant
- Water repellent

Prod. Code	Depth	Fits Pipes	Flange Size 150 & 300 lb	Qty	Colours
CBFR1T	4"	3/8" - 7/8" Tube	N/A	50	● ● ● ●
CBFR1	4"	7/8" Tube to 1" NPT	N/A	50	● ● ● ●
CBFR2	4"	2"	N/A	50	● ● ● ●
CBFR4	6"	4"	1/2"-1"	30	● ● ● ●
CBFR6	6"	6"	1 1/4"-2"	30	● ● ● ●
CBFR9	6"	9" (NPT 8")	2 1/2"-3"	30	● ● ● ●
CBFR10	6"	10"	3 1/2"-4"	30	● ● ● ●
CBFR12	6"	12"	5"-6"	20	● ● ● ●
CBFR15	6"	15"	8"	20	● ● ● ●
CBFR18	6"	18"	10"	20	● ● ● ●
CBFR24	10"	24"	12"-14"	20	● ● ● ●
CBFR30	10"	30"	16"-18"	20	● ● ● ●
CBFR38	10"	38"	24"	10	● ● ● ●

Note

- Print reads FME and the appropriate pipe usage size

VENTED NYLON FME COVER

FOREIGN MATERIAL EXCLUSION

PRODUCT CODE: CBFR SERIES

Features

- Hook and loop panel reveals mesh ventilation area
- Vented panel allows pressure to equalize
- NFPA-701 fire retardant
- Water repellent
- Round bottom for custom fit
- Adjustable drawstring with metal-free cord lock
- US Patent No. 7,900,654

CBVFR12



Prod. Code	Depth	Fits Pipes	Flange Size 150 & 300 lb	Qty	Colours
CBVFR1T*	4"	1" Flat	N/A	50	● ●
CBVFR1*	4"	1" NPT	N/A	50	● ●
CBVFR2.9	4"	2.9" Flat	N/A	50	● ●
CBVFR4	6"	4"	1/2"-1"	30	● ●
CBVFR6	6"	6"	1/4"-2"	30	● ●
CBVFR9	6"	9"	2 1/2"-3"	30	● ●
CBVFR12	6"	12"	5"-6"	20	● ●
CBVFR15	6"	15"	8"	20	● ●
CBVFR18	6"	18"	10"	20	● ●
CBVFR24	10"	24"	12"-14"	20	● ●
CBVFR30	10"	30"	16"-18"	20	● ●
CBVFR38	10"	38"	24"	10	● ●

*Elastic Closure



Note

- Print reads FME and the appropriate pipe usage size

ECONOMY FME COVER

FOREIGN MATERIAL EXCLUSION

PRODUCT CODE: ECOFR SERIES

ECOFR1HDOR, ECOFR4HDOR,
ECOFR10HDOR and
ECOFR24HDOR



Note

- Print reads FME and the appropriate pipe usage size

Features

- Used when FME covers are not expected to be returned
- NFPA-701 fire retardant
- Water repellent, breathable, reusable and washable
- Adjustable drawstring with metal-free cord lock

Prod. Code	Depth	Fits Pipes	Qty
ECOFR1HDOR*	4"	1" NPT	500
ECOFR2HDOR	4"	2"	400
ECOFR4HDOR	6"	4"	400
ECOFR6HDOR	6"	6"	100
ECOFR10HDOR	6"	10"	100
ECOFR12HDOR	6"	12"	100
ECOFR15HDOR	6"	15"	50
ECOFR18HDOR	6"	18"	50
ECOFR24HDOR	10"	24"	50
ECOFR30HDOR	10"	30"	50
ECOFR38HDOR	10"	38"	50

*Elastic Closure

FME COVER HAMPER

FOREIGN MATERIAL EXCLUSION

PRODUCT CODE: HMP SERIES



Features

- 30 gallon rugged plastic or steel drum
- Steel flip-top dome lid
- Labelled with FME HAMPER
- Mesh liner with drawstring
- Perfect for storing soiled FME covers ready to be laundered

Prod. Code	Description	Colours
HMPPL30	30 Gallon Plastic Hamper	● ●
HMPST30	30 Gallon Steel Drum	● ●

HIGH TEMP WELD FIT-UP COVER

FOREIGN MATERIAL EXCLUSION

PRODUCT CODE: WFC SERIES

Features

- Used during the fit-up process to protect against FM intrusion
- One cover spans multiple pipe sizes
- High temperature compatible
- Please contact us with requirements for sizes larger than 36"

Prod. Code	Size
WFC28	2" - 8" NPT
WFC818	8" - 18" NPT
WFC1824	18" - 24" NPT
WFC2436	24" - 36" NPT



HIGH TEMPERATURE COVER

FOREIGN MATERIAL EXCLUSION

PRODUCT CODE: CBFR SERIES

Features

- 500°F continuous use
- 1000°F melting point
- Kevlar drawstring with metal-free cord lock
- Use for welding and on hot pipes
- Also available in rolled goods

Prod. Code	Depth	Fits Pipes	Qty
CBFR6HT	6"	6" NPT	1
CBFR10HT	6"	10" NPT	1



CBFR10HT
Shown installed

STANDARD CAP & PLUG FOR TUBING & NPT

FOREIGN MATERIAL EXCLUSION

PRODUCT CODE: EC, EZ & VCF SERIES



Features

- Conveniently packaged in bags of 100
- Packaged in heavy-duty tinted Ziploc bags
- Refill your FME cabinets with appropriate plugs and caps (see FME Cabinets)
- VCF series are commonly used on valve stems and scaffold knuckles as a bump pad to prevent worker injury

Prod. Code	Style	Qty	Colours
EZ24012	Tube Cap ¼"	100	● ● ●
EZ36512	Tube Cap ⅜"	100	● ● ●
EZ49012	Tube Cap ½"	100	● ● ●
EZ52112	Tube Cap 0.521"	100	● ●
EZ67712	Tube Cap 0.677"	100	● ●
EC10	Electrical Cap ⅝"	100	● ● ●
EC12	Electrical Cap ¾"	100	● ● ●
EC16	Electrical Cap 1"	100	● ● ●
EC18	Electrical Cap 1⅝"	100	● ●
EC20	Electrical Cap 1¼"	100	● ● ●
EC24	Electrical Cap 1½"	100	● ● ●
EC32	Electrical Cap 2"	100	● ● ●
VCF12516*	Tube Cap ⅛"	100	● ● ●
VCF25016*	Tube Cap ¼"	100	● ● ●
VCF37516*	Tube Cap ⅜"	100	● ● ●
VCF50016*	Tube Cap ½"	100	● ● ●
VCF75016*	Tube Cap ¾"	100	● ● ●
VCF100016	Tube Cap 1"	100	● ● ●

*Pink part number is VC instead of VCF



Left to Right:
EZ49012, and EC12

SOCKET PLUG

FOREIGN MATERIAL EXCLUSION

PRODUCT CODE: V SERIES

Features

- Low density polyethylene

Prod. Code	Style	Qty	Colours
V23	½" Socket Plug	100	● ●
V31	¾" Socket Plug	100	● ●
V42	1" Socket Plug	100	● ●
V53	1¼" Socket Plug	100	● ●
V57	1½" Socket Plug	100	● ●
V68	2" Socket Plug	100	● ●



METRIC CAP & PLUG

FOREIGN MATERIAL EXCLUSION

PRODUCT CODE: METRIC CAPS & PLUGS SERIES

Features

- Low density polyethylene
- Available in red



Prod. Code	Style	Fits Hydraulic Fitting	Qty
TP26X15	Metric Threaded Plug	M26x1.5	100
TC26X15	Metric Threaded Cap	M26x1.5	100

NPT CAP

FOREIGN MATERIAL EXCLUSION

PRODUCT CODE: NPT SERIES



Features

- Protects threaded pipe ends
- Rigid structure provides extra protection
- Locking ridge holds cap firmly on pipe end
- Prevents foreign materials during transit and storage
- Low density polyethylene
- Other colours available if minimums are met

Prod. Code	Nominal Pipe Size	Cap Inner Diam.	Qty	Colours
NPT1/4	¼"	0.516	100	●
NPT3/8	⅜"	0.66	100	●
NPT1/2	½"	0.84	100	●
NPT3/4	¾"	1.045	100	●
NPT1	1"	1.29	100	●
NPT1¼	1¼"	1.66	100	●
NPT1½	1½"	1.91	100	●
NPT2	2"	2.378	100	●
NPT2½	2½"	2.86	50	●
NPT3	3"	3.47	30	●
NPT3½	3½"	4	25	●
NPT4	4"	4.5	20	●
NPT5	5"	5.63	20	●
NPT6	6"	6.64	20	●
NPT8	8"	8.67	20	●
NPT10	10"	10.705	25	●
NPT12	12"	12.679	18	●
NPT14	14"	14	15	●
NPT16	16"	16	15	●
NPT18	18"	18	10	●
NPT20	20"	20	15	●
NPT22	22"	22	10	●
NPT24	24"	24	8	●

SWAGE CAP & PLUG

FOREIGN MATERIAL EXCLUSION

PRODUCT CODE: SWGT SERIES

Features

- Low density polyethylene
- Threaded style, Swage fitting

Prod. Code	Style	Fits Hydraulic Fitting	Qty	Colours
SWGTP4	Plug	400-6 (1/4")	100	● ● ●
SWGTC4	Cap	400-6 (1/4")	100	● ● ●
SWGTP6	Plug	600-6 (3/8")	100	● ● ●
SWGTC6	Cap	600-6 (3/8")	100	● ● ●
SWGTP8	Plug	810-6 (1/2")	100	● ● ●
SWGTC8	Cap	810-6 (1/2")	100	● ● ●
SWGTC12	Cap	1210 (3/4")	100	●
SWGTP12	Plug	1210 (3/4")	100	●
SWGTC16	Cap	1610 (1")	100	●
SWGTP16	Plug	1610 (1")	100	●



TETHER-READY THREADED NPT PLUG

FOREIGN MATERIAL EXCLUSION

PRODUCT CODE: S SERIES

Features

- Moulded D-ring into the top to allow for sign attachments
- Manufactured of HDPE with low halogens
- Squared-off head to allow for wrench installations



Prod. Code	Size
S014	1/4"
S038	3/8"
S050	1/2"
S034	3/4"
S100	1"
S114	1 1/4"
S112	1 1/2"

FLANGE PROTECTOR CAP

FOREIGN MATERIAL EXCLUSION

PRODUCT CODE: FLANGE PROTECTOR CAP SERIES



Features

- Low density polyethylene
- Press into flange bolt holes
- No fasteners required

150 lb Series Part Number	300 lb Series Part Number	Nominal Pipe Size	Qty	Colour
1501/2	300-1/2	0.50	100	●
1503/4	300-3/4	0.75	100	●
1501	300-1	1.00	100	●
15011/4	300-1 1/4	1.25	100	●
15011/2	300-1 1/2	1.50	100	●
1502	300-2	2.00	100	●
15021/2	300-2 1/2	2.50	100	●
1503	300-3	3.00	75	●
15031/2	300-3 1/2	3.50	50	●
1504	300-4	4.00	50	●
1506	300-6	6.00	40	●
1508	300-8	8.00	30	●
15010	300-10	10.00	14	●
15012	300-12	12.00	10	●

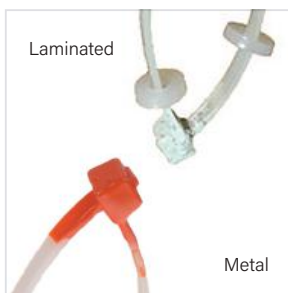
TURBINE AND FME SAFE-T-SPONGE®

FOREIGN MATERIAL EXCLUSION

PRODUCT CODE: PL & NPL / LPL SERIES

Features

- **Compressible**
- **Quick installation and removal**
- **Low halogens**
- **Won't lose air pressure like inflatable bladders**
- **Remains in position indefinitely**
- **Withstands sandblasting**
- **Reusable**
- **Insert and withdraw through manhole openings**
- **Sponges should be ordered one size above the pipe they will be used on. For example, a 20" pipe would require a 22" sponge for best fit.**
- **Custom sizes and shapes are commonly created for special applications like L.P. and H.P. extraction ports, tube and seal openings, turbine oil applications and more.**
- **Internal plug should be fitted with a "tell-tail"**
- **Options in the Barrier Identification section.**
- **US Patent No.**
6,506,014 & 6,824,356



Part Number (has Metal)	Laminated Part Number (Nuclear)	Outer Dia.	Qty
PL1	NPL1	1.00"	25
PL1.25	NPL1.25	1.25"	25
PL1.5	NPL1.5	1.5"	25
PL2	NPL2	2.25"	25
PL2.5	NPL2.5	2.75"	25
PL3	NPL3	3.25"	25
PL4	NPL4	4.25"	15
PL5	LPL5	5"	10
PL6	LPL6	6"	10
PL8	LPL8	8"	10
PL10	LPL10	10"	10
PL12	LPL12	12"	1
PL14	LPL14	14"	1
PL16	LPL16	16"	1
PL18	LPL18	18"	1
PL20	LPL20	20"	1
PL22	LPL22	22"	1
PL24	LPL24	24"	1
PL26	LPL26	26"	1
PL28	LPL28	28"	1
PL30	LPL30	30"	1
PL32	LPL32	32"	1
PL34	LPL34	34"	1
PL36	LPL36	36"	1
PL38	LPL38	38"	1
PL40	LPL40	40"	1
PL42	LPL42	42"	1
PL44	LPL44	44"	1
PL46	LPL46	46"	1
PL48	LPL48	48"	1
PL50	LPL50	50"	1

Part Number	Laminated Part Number	Square Size
SQ1	LSQ1	1' x 1'
SQ2	LSQ2	2' x 2'
SQ3	LSQ3	3' x 3'
SQ4	LSQ4	4' x 4'

INFLATABLE BAG PLUG

FOREIGN MATERIAL EXCLUSION

PRODUCT CODE: INFBP SERIES



Size	Gum Rubber Part Number	Nitrile Part Number	Quik Fit Plug	Nitrile Quik Fit Plug
2"	INFBP102	INFBN102	QC2	QCN2
3"	INFBP103	INFBN103	QC3	QCN3
4"	INFBP104	INFBN104	QC4	QCN4
5"	INFBP105	INFBN105	N/A	N/A
6"	INFBP106	INFBN106	QC6	QCN6
8"	INFBP108	INFBN108	QC8	QCN8
10"	INFBP110	INFBN110	QC10	QCN10
12"	INFBP112	INFBN112	QC12	QCN12
14"	INFBP114	INFBN114	QC14	QCN14
15"	INFBP115	INFBN115	N/A	N/A
16"	INFBP116	INFBN116	QC16	QCN16
18"	INFBP118	INFBN118	QC18	QCN18
20"	INFBP120	INFBN120	QC20	QCN20
21"	INFBP121	INFBN121	N/A	N/A
22"	INFBP122	INFBN122	QC22	QCN22
24"	INFBP124	INFBN124	QC24	QCN24
26"	INFBP126	INFBN126	QC26	QCN26
28"	INFBP128	INFBN128	QC28	QCN28
30"	INFBP130	INFBN130	QC30	QCN30
32"	INFBP132	INFBN132	QC32	QCN32
34"	INFBP134	INFBN134	N/A	N/A
36"	INFBP136	INFBN136	QC36	QCN36
38"	N/A	N/A	QC38	QCN38
40"	INFBP140	INFBN140	N/A	N/A
42"	INFBP142	INFBN142	QC42	QCN42
44"	INFBP144	INFBN144	N/A	N/A
48"	INFBP148	INFBN148	QC48	QCN48

Features

- For extra safety ask for inflatable plugs with attached tethers. Inflatable plugs have the capacity to deflate and fall into equipment. Tethers prevent this from happening
- Add TL- to the beginning of the part number for a tether loop option. Quik Fit plugs come with a tether loop
- Quik Fit plugs are much like bag plugs except they will hold up to 10 lbs of pressure in the pipe
- Make sure you identify this internal plug with an appropriate flagging device found in the Barrier Identification section
- Polyester cover protects the bladder and reinforces it in the case of accidental over-inflation
- Available in high temp materials
- Temp. Rating: 160°F, optional Nitrile 180°F or Chlorobutyl 220°F

BAG PLUG ACCESSORIES

Prod. Code	Description
IAL/SM	6' Hose w/valve
IAL/LG	12' Hose w/valve
BCGAUGE	Gauge
VLV0205	Valve 2 - 5"
VLV0614	Valve 6 - 14"
VLV1526	Valve 15 - 26"
VLV2772	Valve 27 - 72"

ALUMINIUM EXPANSION PLUG

FOREIGN MATERIAL EXCLUSION

PRODUCT CODE: AP SERIES

Features

- 70% lighter than steel plugs
- Durable cast aluminum
- Maintenance free
- Easy expansion, non corrosive
- Special sizes available
- **Temp Rating:** 160°F; optional Nitrile 180°F or 450°F (Viton, Silicone)



Prod. Codes	Nominal Size	Unexpanded	Expanded
AP01.50	1.50"	1.456"	1.889"
AP02.00	2.00"	1.889"	2.440"
AP02.50	2.50"	2.440"	2.775"
AP03.00	3.00"	2.795"	3.425"
AP03.50	3.50"	3.503"	3.700"
AP04.00	4.00"	3.779"	4.133"
AP04.50	4.50"	4.251"	4.724"
AP05.00	5.00"	4.842"	5.393"
AP06.00	6.00"	5.900"	6.550"
AP07.00	7.00"	6.550"	7.300"
AP08.00	8.00"	7.700"	8.550"
AP09.00	9.00"	8.200"	9.100"
AP10.00	10.00"	9.200"	10.250"
AP11.00	11.00"	10.300"	11.200"
AP12.00	12.00"	11.350"	12.450"
AP14.00	14.00"	13.800"	15.100"
AP15.00	15.00"	14.350"	15.800"
AP16.00	16.00"	15.600"	17.000"
AP18.00	18.00"	17.450"	19.250"
AP20.00	20.00"	19.150"	20.650"
AP21.00	21.00"	20.650"	22.100"
AP24.00	24.00"	23.550"	25.500"
AP27.00	27.00"	26.250"	27.700"
AP30.00	30.00"	29.250"	31.000"
AP32.00	32.00"	31.250"	32.000"
AP36.00	36.00"	34.500"	36.800"

NYLON EXPANSION PLUG

FOREIGN MATERIAL EXCLUSION

PRODUCT CODE: VS & SS SERIES



Features

- 20% lighter than metal
- Shatter-proof, corrosive resistant
- Easily cleanable
- Easy expansion
- **Temp Rating:** 160°F; optional Nitrile 180°F or 300°F (Viton, Silicone)

SOLID STEM

Prod. Codes	Nominal Size	Unexpanded	Expanded
SS0.50	0.50"	0.490"	0.600"
SS0.75	0.75"	0.740"	0.900"
SS1.00	1.00"	0.975"	1.200"
SS1.25	1.25"	1.225"	1.450"
SS1.50	1.50"	1.480"	1.750"

HOLLOW STEM

Prod. Codes	Nominal Size	Unexpanded	Expanded
VS0.50	0.50"	0.490"	0.600"
VS0.75	0.75"	0.740"	0.900"
VS1.00	1.00"	0.975"	1.200"
VS1.25	1.25"	1.225"	1.450"
VS1.50	1.50"	1.420"	1.930"
VS2.00	2.00"	1.930"	2.360"
VS2.50	2.50"	2.400"	2.760"
VS3.00	3.00"	2.870"	3.310"
VS3.50	3.50"	2.870"	3.310"
VS4.00	4.00"	3.540"	4.250"
VS4.50	4.50"	2.870"	3.310"
VS5.00	5.00"	4.720"	5.370"
VS6.00	6.00"	5.500"	6.290"

EXPANSION PLUG KIT

FOREIGN MATERIAL EXCLUSION

PRODUCT CODE: WTP001



Features

- Kit included nylon expansion plugs from ½" through 4" plus fittings and caps in a hard carrying case with custom foam inserts
- These plugs are used when an airtight seal is required
- Silicone, Nitrile, and Viton seals available applications and more

FLOW STOPPER

FOREIGN MATERIAL EXCLUSION

PRODUCT CODE: MLS SERIES

Features

- **Uses: block plug, water/air test plug, and leak locating back plug**
- **Grows shorter as it inflates - reduces plug stress**
- **Kevlar reinforced with nylon**
- **Can be floated down pipe and stopped at desired location**
- **Inflate pressure PSI at 45 for all models**
- **Temp. Rating: 160°F, optional Nitrile 180°F**



Prod. Codes	Range Inches	Min.	Max.	Back Pressure PSI	Length
MLS1.5/2.8 (35/70)	1.4-2.8	1.3	2.8	34	8.3"
MLS02/04 (50/100)	2-4	1.8	4	34	7.9"
MLS03/06 (70/150)	3-6	2.6	6	34	14.6"
MLS04/08 (100/200)	4-8	3.5	8	19	21.65"
MLS06/12 (150/300)	6-12	5.5	12	19	21.65"
MLS08/16 (200/400)	8-16	7.3	16	19	25.6"
MLS12/24 (300/600)	12-24	11.3	24	19	33.5"
MLS15/30 (375/750)	15-30	14.2	30	19	39.4"
MLS20/40 (500/1000)	20-40	19.1	40	14.5	45.3"
MLS24/48 (600/1200)	24-48	23	48	14.5	51.2"

BYPASS

FOREIGN MATERIAL EXCLUSION

PRODUCT CODE: FXBP SERIES

- **Inflate pressure PSI at 30 for all models**

Prod. Codes	Range Inches	Min.	Max.	Back Pressure PSI	Length	Weight
FXBP 02/04 50/100	2-4	1.8	4	26	12.9"	½ or 1lbs
FXBP 03/06 70/150	3-6	2.6	6	26	15.75"	1½ lbs
FXBP 04/08 100/200	4-8	3.5	8	11	19.7"	2 lbs
FXBP 06/12 150/300	6-12	5.5	12	11.5	22.85"	2 lbs
FXBP 08/16 200/400	8-16	7.3	16	11.5	26.8"	2 lbs
FXBP 12/24 300/600	12-24	11.3	24	11.5	33.5"	3 lbs
FXBP 15/30 375/750	15-30	14.2	30	14.5	39.4"	4 lbs
FXBP 20/40 500/1000	20-40	19.1	40	14.5	47.5"	4 lbs
FXBP 24/48 600/1200	24-48	23	48	13	55.2"	4 lbs
FXBP 30/60	30-60	26	60	13	102.5"	6 lbs
FXBP 40/80	30-60	39.5	80	13	122"	6 lbs

CONICAL DRAIN PLUG

FOREIGN MATERIAL EXCLUSION

PRODUCT CODE: DP SERIES



Features

- Removable
- Non-mechanical - just plug in drain
- Durable polyurethane

Prod. Codes	Diameter	Height
DP2	2"	4.75"
DP3	3"	5"
DP3-5	3.5"	5.5"
HDP4	4"	5.75"
DP6	6"	5.5"

MUSHROOM VENT CAP

FOREIGN MATERIAL EXCLUSION

PRODUCT CODE: TY SERIES



Prod. Code	Material	NPT	Colours
TY20SS	Stainless steel	1/2"	● ● ●
TY21SS	Stainless steel	3/4"	● ● ●
TY22SS	Stainless steel	1"	● ● ●
TY21	Zinc plated cast iron	3/4"	● ● ●
TY22	Zinc plated cast iron	1"	● ● ●
TY23	Zinc plated cast iron	1 1/4"	● ● ●
TY24	Zinc plated cast iron	1 1/2"	● ● ●
TY25	Zinc plated cast iron	2"	● ● ●
TY27	Zinc plated cast iron	3"	● ● ●

Features

- Commonly used by operations to cover open vertical pipes
- 316 S/S vent caps in either 1/2", 3/4" or 1" NPT and do not contain an internal screen and are not designed for overflow protection
- 25 piece minimum per size for colour coating
- Colour coated caps are corrosion, chip, abrasion, chemical and corrosion resistant
- Raw metal non S/S version contains a 30 mesh screen to prevent debris except when powder coated

BREATHER VENT FILTER

FOREIGN MATERIAL EXCLUSION

PRODUCT CODE: TYK SERIES

Features

- Low profile
- Sintered bronze filter
- 40 micron filtration
- Prevent dirt from entering single acting cylinders
- Use as air breathers on upper end of hydraulic cylinders



Prod. Code	Plating Type	NPT	Max cfm @100 psi	Height	Diameter	Max Pressure	Max Temp
TYK11	Nickel	½"	16.75	⅞"	⅞"	150	300° F
TYK12	Nickel	¾"	20.25	1"	1½"	150	300° F
TYK13	Nickel	1"	29.00	1½"	1½"	150	300° F
TYK14	Nickel	1¼"	50.50	1¾"	1½"	150	300° F
TYK15	Nickel	1½"	73.00	1½"	2"	150	300° F
TYK16	Zinc	2"	137.00	1½"	2¾"	125	375° F

ALUMINIUM VENT CAP

FOREIGN MATERIAL EXCLUSION

PRODUCT CODE: CBFR SERIES

Features

- Labyrinth air path restricts direct entry of dirt and moisture
- Protected vent



Prod. Code	NPT	OAH (mm)
AV18	⅛"	1.12 (28.45)
AV14	¼"	1.19 (30.23)
AV38	⅝"	1.25 (31.75)
AV12	½"	1.31 (33.27)
AV34	¾"	1.50 (38.10)

SPRING CLAMP

FOREIGN MATERIAL EXCLUSION

PRODUCT CODE: CLAMP SERIES



Features

- A convenient way to secure pipe caps and other small cylindrical devices
- Clamp opens when squeezed and tightens when released
- Max tether length 2 ft

Prod. Codes	For Diameter	Rating
CLAMP110	1.12" to 1.17"	4oz
CLAMP117	1.19" to 1.25"	5oz
CLAMP132	1.38" to 1.45"	7oz
CLAMP165	1.74" to 1.9"	13oz

VINYL MAGNETIC SHEET

FOREIGN MATERIAL EXCLUSION

PRODUCT CODE: MAGSHT SERIES



Features

- Easily cut to any size
- Orange comes with black text
- Red/Pink comes with white text
- Custom print available
- Small sections of sheet can also be used in signs
- When custom manufactured covers just aren't fast enough, these vinyl magnets provide an instant solution; just cut and stick
- Used in: Diesel generators, Manway openings, Breaker Openings, Turbine maintenance and more...

Prod. Codes	Sizes	Colours
MAGSHT2436	24" H X 36" L	● ● ●
MAGSHT2436RL	24" H X 25' L (Roll)	● ● ●

FLOOR COVERING COVERGUARD

FOREIGN MATERIAL EXCLUSION

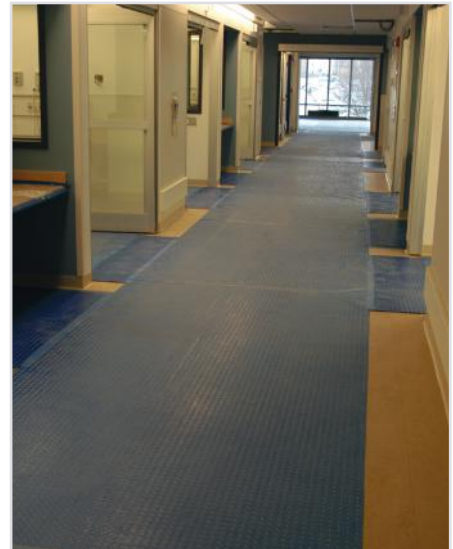
PRODUCT CODE: CG SERIES

Features

- Durable, tear resistant
- Easy to clean, reusable
- Chemical resistant, waterproof
- Quick installation and removal
- Fire retardant polyethylene



Prod. Codes	Description	Width	Length
CG1036DP	10 Mil FR-Blue Diamond Plate	36"	393"
CG1072DP	10 Mil FR-Blue Diamond Plate	72"	393"
CG1336DP	13 Mil FR- Blue Diamond Plate	36"	360"
CG1372DP	13 Mil FR- Blue Diamond Plate	72"	360"
CG2536DP	25 Mil FR- Blue Diamond Plate	36"	180"
CG2572DP	25 Mil FR- Blue Diamond Plate	72"	180"
CG4036DP	40 Mil FR- Blue Diamond Plate	36"	120"
CG4072DP	40 Mil FR- Blue Diamond Plate	72"	120"
CG2048SF	20 Mil FR- Blue Smooth Flat	48"	100"
CG303610SF	30 Mil FR- Blue Smooth Flat	36"	100"
CG0872SC	8 Mil FR- White Scaffold	72"	330"
CGTP03BU	Seam Tape- Blue 3"	3"	165"



ROUND & SQUARE DRAIN COVER

FOREIGN MATERIAL EXCLUSION

PRODUCT CODE: DC SERIES



Features

- Fast installation
- Hard tear-resistant top layer
- Withstands repeated use
- High visibility yellow
- Cleans easily
- Chemically resistant
- Make sure to allow at least 3" overlap on each side for ideal installation
- Flexible tacky bottom moulds to uneven surfaces

SQUARE

Drive-over Part Number	Walk-over Part Number	Size	Fits Drain
DC3001818	DC4001818	18" x 18"	12" x 12"
DC3012424	DC4012424	24" x 24"	18" x 18"
DC3023030	DC4023030	30" x 30"	24" x 24"
DC3033636	DC4033636	36" x 36"	30" x 30"
DC3044242	DC4044242	42" x 42"	36" x 36"
DC3054848	DC4054848	48" x 48"	42" x 42"
DC3065454	DC4065454	54" x 54"	48" x 48"

ROUND

Drive-over Part Number	Walk-over Part Number	Size	Fits Drain
DC31212	DC41212	12" Dia.	Up to 6" Dia.
DC32020	DC42020	20" Dia.	Up to 14" Dia.
DC33030	DC43030	30" Dia.	Up to 24" Dia.

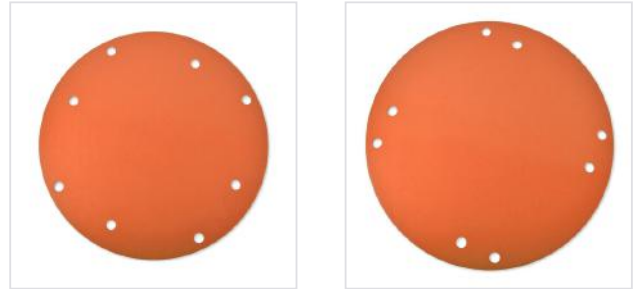
HDPE RIGID SHEET & LARGE FLANGE PROTECTOR

FOREIGN MATERIAL EXCLUSION

PRODUCT CODE: HDPE SHEET & FLANGE SERIES

Features

- HDPE flange protectors for flange sizes from 14" - 24"
- 150 lb or 300 lb, lighter than steel alternatives
- HDPE Sheets used for creating FME Barrier for those components where conventional devices aren't practical
- Protects the face of the flange
- 0.375" thick and available in orange
- Custom machined shapes available
- HDPE Sheets are a good replacement for plywood



Prod. Code	Size
1501416	150 lb Flange Protector 14",16"
1501820	150 lb Flange Protector 18", 20"
15024	150 lb Flange Protector 24"
300141618	300 lb Flange Protector 14",16",18"
3002024	300 lb Flange Protector 20", 24"
HDPE44	48" x 48" HDPE Sheets

PRINTED GRIFFOLYN

FOREIGN MATERIAL EXCLUSION

PRODUCT CODE: RFTX1200FR

Features

- Puncture/tear resistant
- Anti-static, Fire retardant NFPA-701, weather and contamination resistant
- Internally reinforced polyethylene laminate
- Use this to cover large openings and for hand rail covers/barriers
- When magnet sheets aren't suitable, Griffolyn provides a workable alternative



Prod. Codes	Description	Colours
RFTX1200FR	50" x 100" Yards Printed Griffolyn	● ● ●

PARTS & EQUIPMENT COVERING TARP

FOREIGN MATERIAL EXCLUSION

PRODUCT CODE: TARP SERIES



Features

- Water repellent, fire retardant NFPA-701, no metal grommets
- High temperature tarps are available in custom sizes
- Reinforced button holes or webbing straps provide a solution for strapping
- FME Tarps are commonly used over grating to prevent items from falling through and on irregular shaped components

Prod. Code	Fabric	Size	Qty
TRP55	Nylon Tarp	5' x 5'	1
TRP1010	Nylon Tarp	10' x 10'	1
TRP1020	Nylon Tarp	10' x 20'	1
TRP2020	Nylon Tarp	20' x 20'	1
ECOTRP5X5	Economy Tarp	5' x 5'	25
ECOTRP10X10	Economy Tarp	10' x 10'	10

BARRIER IDENTIFICATION

Many times the barriers used to prevent foreign material become foreign material themselves. Small plastic plugs, internally installed devices, and other barriers are left in place after work is done and can cause equipment damage.

The devices in this section reduce human error by making small or 'installed out of view' plugs obvious. Take human error out of the equation with these barrier identification supplies.

It is recommended that at a minimum any FME device that is installed inside a tube, pipe, or open component have extra identification. An even higher need for identification exists when a system can be reassembled without removing the FME device.



FME BARRIER & EXEMPT STICKERS

FOREIGN MATERIAL EXCLUSION

PRODUCT CODE: ST SERIES



Features

- Use on FME barriers/covers that aren't colour themed or don't have FME labels
- FME Exempt stickers are used on items where FME isn't a concern or debris would be obvious

Prod. Code	Indoor/Outdoor	Description	Stickers/Roll	Colours
ST23	Indoor	2" x 3" "FME BARRIER"	250	● ● ●
ST35	Indoor	3" x 5" "FME BARRIER"	250	● ● ●
ST231	Indoor	2" x 3" "FME EXEMPT"	1000	● ● ●
ST232	Indoor/Outdoor	2" x 3" "FME EXEMPT"	500	● ● ●



Foreign Material Exclusion

Product Guide

2022

**HEIGHT SAFETY.
SIMPLIFIED.**

guardianfall.com

Guardian and its logo are registered trademarks of Guardian Fall in the US and other countries.