

**NEW  
PRODUCTS INSIDE**



# **CABLE CLIMBING SYSTEM & SLEEVE**

Ladder Safety

**HEIGHT SAFETY.  
SIMPLIFIED.**

[guardianfall.com](http://guardianfall.com)



# CABLE CLIMBING SYSTEM & SLEEVE

Ladder Safety



## Cable Climbing System

The Guardian Cable Climbing System is an innovative Personal Fall Arrest System (PFAS) designed for fixed ladders or other vertical height safety applications. It offers easy installation and a patent-pending shock absorber for superior arrest force mitigation in the event of a fall.

Robust, adjustable mounting clamps reduce needed hardware by up to 25%\* for quicker, simpler installation while lowering the risk of dropped objects at height. The 3/8" 1 x 7 galvanized steel cable resists wear and corrosion for a long service life, and the bottom bracket tensioning system provides easy and accurate cable tensioning for a worry-free installation. The top bracket features an OSHA-compliant fall arrest anchorage connector for incidental single-point tie-offs with compatible lanyards or self-retracting lifelines.

The Cable Climbing System comes complete with galvanized top and bottom mounting brackets, rubber cable guides (quantity based on system height), swaged energy-absorbing cable assembly, and all necessary installation hardware.

## Safety in Motion

### Specifications

#### User weight range

*(including clothing, tools and equipment)*

100-310 lb (OSHA) | 130-310 lb (ANSI)

**Maximum Arrest Force** | 1,800 lb

**Average Arrest Force** | 1,350 lb

**Maximum Allowable Free Fall** | 24 in

**Maximum Arresting Distance** | 39 in

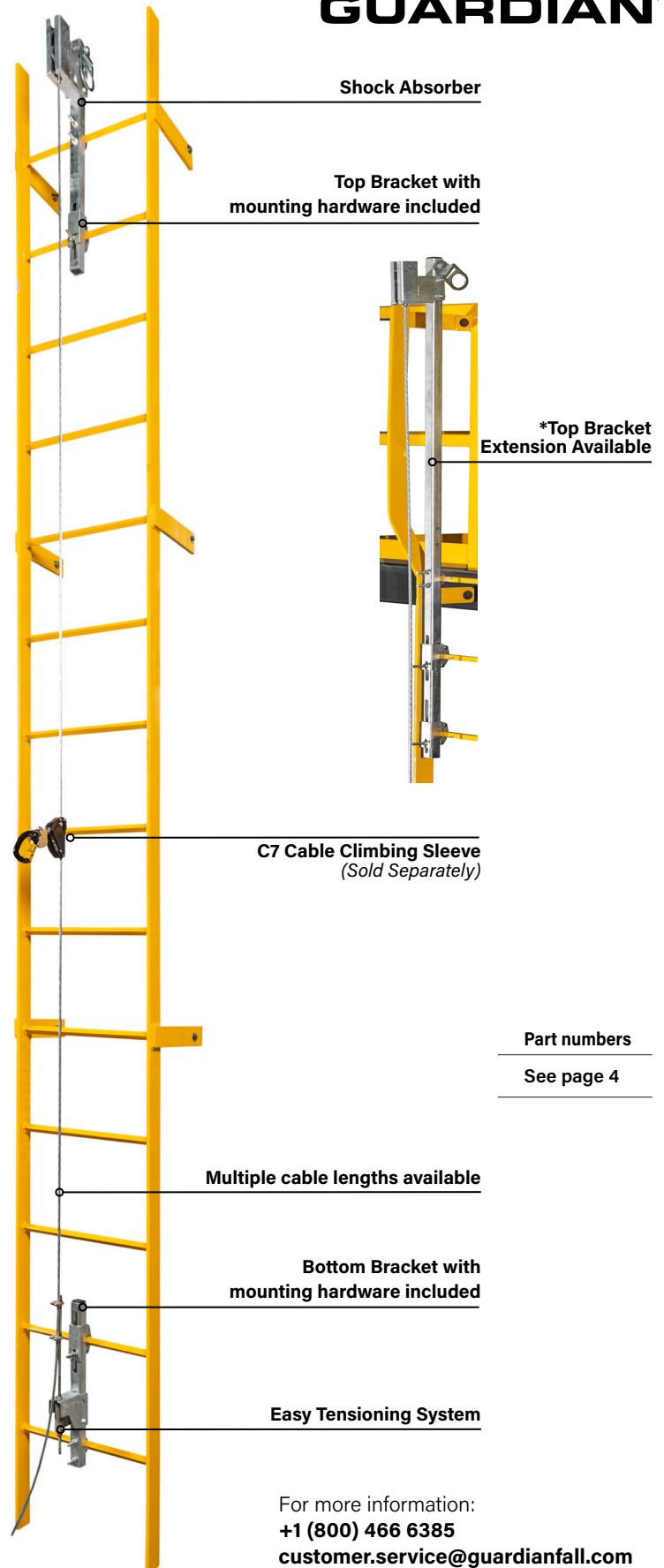
**Materials** | Galvanized Steel, Stainless Steel and Rubber

\* vs leading ANSI Z359.16 System. Less installation parts. Less risk for dropped objects.

The Cable Climbing System is compliant with:  
**OSHA 1910.29 and 1926.1053, ANSI Z359.16**

#### Declaration of conformity

All products have been tested in an ISO 17025 certified laboratory in accordance with all requirements specified by ANSI Z359.7-2019.



Part numbers

See page 4

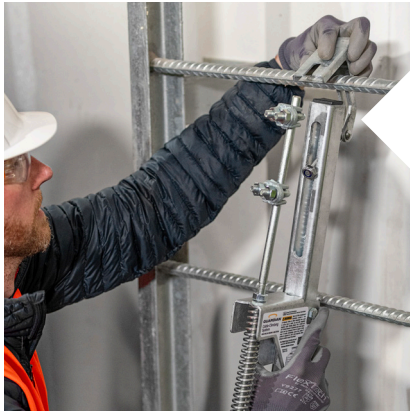
For more information:  
**+1 (800) 466 6385**  
[customer.service@guardianfall.com](mailto:customer.service@guardianfall.com)



Tested in the  
**United States**

# CABLE CLIMBING SYSTEM & SLEEVE

Ladder Safety



## Key Features & Benefits

### Patent-Pending Integrated Mounting Clamp

Reduces installation hardware by up to 25%\*

### Integrated Patent-Pending Shock Absorber

Reduced arresting forces with a pre-swaged all metal design

### Galvanized Steel Mounting Brackets

with mounting hardware included

### Easy Tensioning System

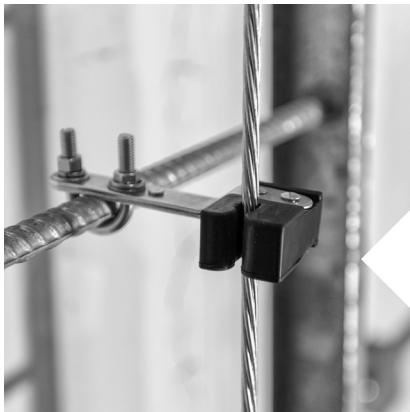
Apply and maintain proper cable tension with simple hand tools

### Cable Guides Included

Secures cable in place and effortlessly disconnects for smooth transitions

### 3/8" 1x7 Galvanized Steel Cable

Resists cuts and abrasions



## C7 Cable Climbing Sleeve



Fully compatible with the Guardian Cable Climbing System, the patent-pending C7 Cable Climbing Sleeve offers smooth ascent and mitigates nuisance lock-ups on descent. It can be operated one-handed, and boasts an anti-panic locking cam, a built-in energy absorber and a double-action locking mechanism ensuring the sleeve stays securely attached to the cable.



Part number	Description
25034	C7 Cable Climbing Sleeve

## LADDER CLIMBING SYSTEMS

Included in each system is cable, top and bottom brackets and cable guides. Quantity of components depends on size of system.

**NOTE: C7 Cable Climbing Sleeve sold separately.**



Part Number(s)	Cable Length	Top Bracket	Bottom Bracket	Cable Guide(s)
1400305	20 ft (6 m)	Standard	Standard	0
1400306	30 ft (9 m)	Standard	Standard	1
1400307	40 ft (12 m)	Standard	Standard	1
1400308	50 ft (15 m)	Standard	Standard	2
1400309	60 ft (18 m)	Standard	Standard	2
1400310	70 ft (21 m)	Standard	Standard	3
1400311	80 ft (24 m)	Standard	Standard	3
1400312	90 ft (27 m)	Standard	Standard	4
1400313	100 ft (30 m)	Standard	Standard	4
1400314	125 ft (38 m)	Standard	Standard	6
1400315	150 ft (46 m)	Standard	Standard	7
1400316	175 ft (53 m)	Standard	Standard	8
1400317	200 ft (61 m)	Standard	Standard	9
1400318	225 ft (68 m)	Standard	Standard	11
1400319	250 ft (76 m)	Standard	Standard	12
1400320	275 ft (84 m)	Standard	Standard	13
1400321	300 ft (91 m)	Standard	Standard	14
5300368	20 ft (6 m)	Extension	Standard	0
5300369	30 ft (9 m)	Extension	Standard	1
5300370	40 ft (12 m)	Extension	Standard	1
5300371	50 ft (15 m)	Extension	Standard	2
5300372	60 ft (18 m)	Extension	Standard	2
5300373	70 ft (21 m)	Extension	Standard	3
5300374	80 ft (24 m)	Extension	Standard	3
5300375	90 ft (27 m)	Extension	Standard	4
5300376	100 ft (30 m)	Extension	Standard	4
5300377	125 ft (38 m)	Extension	Standard	6
5300378	150 ft (46 m)	Extension	Standard	7
5300379	175 ft (53 m)	Extension	Standard	8
5300380	200 ft (61 m)	Extension	Standard	9
5300381	225 ft (68 m)	Extension	Standard	11
5300382	250 ft (76 m)	Extension	Standard	12
5300383	275 ft (84 m)	Extension	Standard	13
5300384	300 ft (91 m)	Extension	Standard	14
1400143	Top Bracket Extension Assembly (Galvanized)			
1400345	Cable Guide Assembly			

+1 (800) 466 6385  
 customer.service@guardianfall.com  
 guardianfall.com

**HEIGHT SAFETY.  
SIMPLIFIED.**



To see our entire range of height safety products, training courses, and engineered systems, visit our web site [guardianfall.com](https://guardianfall.com)