

A large industrial facility, possibly a refinery or chemical plant, with multiple levels of scaffolding, pipes, and large cylindrical tanks. The scene is dimly lit, with some lights visible on the structure. The background is a dark, overcast sky.

TY-FLÖT®

FOREIGN MATERIAL EXCLUSION PRODUCT GUIDE

**BUILT
ON TRUST.**

ty-flot.com

FOREIGN MATERIAL EXCLUSION SAVES COSTS

FME prevents expensive problems before they start—and delivers immediate value.

Most FME-ready parts cost about the same as standard components, yet they're built to last.

The upfront investment is minimal. The long-term payoff is significant.

BY FAILING TO PREPARE, YOU ARE PREPARING TO FAIL

In sports, practice builds performance. FME is no different—while the work varies, preparation stays consistent.

An FME Ready Worker secures tools, clothing, and gear, eliminating loose hazards with tethers, hook-and-loop fasteners, or tape. With clean soles, empty pockets, and secured papers, they reduce risk, protect the worksite, and maintain the highest standards.

A HERITAGE OF INNOVATION & PARTNERSHIP

Founded in 1995, Ty-Flot quickly became a pioneer in the nuclear market, earning a reputation for innovation with over 100 patented FME solutions. Ty-Flot is now part of the Guardian family, carrying its legacy of quality across industries.

WHAT IS THE DIFFERENCE BETWEEN FOD CONTROL AND FME?

The aviation industry refers to its debris control efforts as Foreign Object Debris Control or Foreign Object Debris Prevention, while the nuclear industry refers to the control as Foreign Material Exclusion. There are a few subtle differences in FOD Control and FME but the major concepts are the same.

Ty-Flot offers a comprehensive range of FME products engineered to deliver best-in-class Foreign Material Exclusion and complete system protection. From barriers, covers, caps, plugs, and tarps to fully customized solutions, Ty-Flot provides everything required to prevent debris contamination—even in the most complex systems.

Declaration of conformity

All products have been tested in an ISO 17025 accredited laboratory in accordance with all requirements specified by the applicable standards and regulations.

CONTENTS

FME Cabinets

Basic Cabinets	5
Auxiliary Cabinets	6
Supreme Cabinets	7
Extreme Cabinets	7

FME Covers

Nylon Tube & Pipe Covers	9
Nylon Vented Tube & Pipe Covers	10
Economy Pipe Covers	11
High Temp Covers	12
High Temp Weld Fit-Up Covers	12
FME, Parts & Equipment Tarps	13
Magnetic Tarps	14
Economy Tarps	14
Printed Griffolyn®	15
Magnetic FME Covers	15

FME Barriers

Cover Guard® Diamond Plate	
Flame Retardant Floor Covering	17
Cover Guard® Smooth	
Flat Flame Retardant	17
Cover Guard® Flame Retardant	
Seam Tape	17
Drain Covers - Drive Over	18
Drain Covers - Walk Over	18
Vinyl Magnetic Sheets	19

Flange Protectors

HDPE Flange Protectors	21
HDPE Flange Protector Sheets	22
Specialty Flange Protectors	22

FME Caps

Flange Protector Caps	24
Vent Caps	25
Utility Caps - C Series	25
Electrical Caps -	
EC, EZ, VCF & VC SERIES	26
NPT Caps	27
Threaded Caps	28

FME Plugs and Sponges

NPT Threaded Plug	30
Tether-Ready NPT Threaded Plug	30
Threaded Plugs	31
Flared Threaded Plugs	31
Safe-T-Sponge®	32
LPL Safe-T-Sponge®	32
Original Safe-T-Sponge®	33
Laminated Safe-T-Sponge®	33
Square Safe-T-Sponge®	34
High Temp Safe-T-Sponge®	34
Inflatable Bag Plug	35
Nitrile Inflatable Bag Plug	35
Aluminum Expansion Plugs	36
Nylon Expansion Plugs	37
Conical Drain Plugs	38
Socket Plugs	38

FME Tethers

Badge Clips	40
Versaclamp Badge Straps	40
Neck Lanyards	41
Safety Tethers	42
Dosimetry/Retractable Leash	42
Bottle & Can Pouches	43
Glove Holders	43
Glasses Retainer	44
HardHat Tethers	45
Floating Pens	46
Pen & Pencil Tethers	47

FME Fasteners

Hook & Loop Fastener	49
Embossed Floating Cable Tie	50
Natural Floating Cable Tie	50
Tefzel Cable Tie	51
Floating Cable Ties	51

FME Accessories

Alternatives To Hand Wire Brushes	53
FME PPE	53
Deadblow Hammer	54
Huck Towels	54
Magnetic Trays	55
Utility Bags	56
Inspection & Retrieval	56

FME Tinted Plastics

Tinted Garbage Bags	58
Tinted Lay Flat Sleeving	58
Tinted Zip Lock Bag	59
V-Pak Dosimetry Bags	59

Zone Creation & Control

Hooks & Magnets	61
FME Barricade Tape	62
FME Vinyl Floor Tape	62
FME & Nuclear Duct Tape	63
FME Hard Hat Decals & Magnets	63
FME-Ready Worker Signs	64
FME Monitor Arm Bands	64
FME Monitor Vest	65
FME Monitor Kits	65
THINK FME™ POSTERS	66
FME Sign Inserts	67
FME Signs	68
FME & Exempt Stickers	69
Inventory Label	69
Flagging Device For Plastic Plugs	70
FME Flagging Signs	70
Plastic Chain Stanchions	71
Retractable Stanchions 15 ft	71
Retractable Stanchions 30 ft	72
Wall Mount Retractable Barriers	73
Receiving Post	74

Cover Guard® is a registered Trademark of Bainbridge International.
 Safe-T-Sponge® is a Trademark of Advanced F.M.E. Products. Griffolyn® is a registered Trademark of Reef Industries. Use of these third-party trademarks does not imply affiliation with or endorsement by owner of these trademarks.

FME CABINETS

- Accountability & Control
- Organization & Efficiency
- Safety & Risk Reduction
- Compliance & Best Practices

Cabinets are purpose-built storage and control systems designed to keep everything you need for FME and Dropped Object Prevention organized and accounted for when working in sensitive environments like power generation facilities, industrial manufacturing, oil & gas and aerospace. The variety of cabinets offer the end user the ability to pick the cabinet that best suites their maintenance applications. Custom cabinets are an option for the customer that is very specific about what they need in any specific area of their business. Custom Cabinet options available upon request.



GENERAL APPLICATIONS AND LOCATIONS WHERE FME CABINETS ARE COMMONLY USED

Turbine Deck



Refuel Floor



Warehouse



Instrumentation & Control



Electrical Shop



Basic FME Cabinets

Basic Series



Features

- Contains a variety of the most common FME products
- Each model specifically tailored for the most common setups
- A popular option for new FME programs
- Contents available on request

Part Numbers	Description	Weight	Dimensions (WxDxH)	Colors
BASICOR	Basic FME Cabinet Stocked	710 lb (322 kg)	36" x 24" x 78" (91 cm x 61 cm x 198 cm)	Orange
BASICPK	Basic FME Cabinet Stocked	710 lb (322 kg)	36" x 24" x 78" (91 cm x 61 cm x 198 cm)	Pink
BASICRD	Basic FME Cabinet Stocked	710 lb (322 kg)	36" x 24" x 78" (91 cm x 61 cm x 198 cm)	Red
BASICOREMPTY	BASIC Cabinet Only with Bins, FME product not included	584 lb (265 kg)	36" x 24" x 78" (91 cm x 61 cm x 198 cm)	Orange

Auxiliary FME Cabinets

Aux Series

Features

- Contains a variety of the most common FME products
- Each model specifically tailored for the most common setups
- A popular option for new FME programs
- Rolling casters for mobility
- Contents available on request



AUX1OR

Part Numbers	Description	Weight	Dimensions (WxDxH)	Colors
AUX1OR	AUX-1 FME & DROPS Cabinet Stocked	545 lb (247 kg)	36" x 24" x 42" (91 cm x 61 cm x 106 cm)	Orange
AUX1PK	AUX-1 FME & DROPS Cabinet Stocked	545 lb (247 kg)	36" x 24" x 42" (91 cm x 61 cm x 106 cm)	Pink
AUX1RD	AUX-1 FME & DROPS Cabinet Stocked	545 lb (247 kg)	36" x 24" x 42" (91 cm x 61 cm x 106 cm)	Red
AUX2OR	AUX-2 FME Cabinet Stocked	500 lb (226 kg)	36" x 24" x 42" (91 cm x 61 cm x 106 cm)	Orange
AUX2PK	AUX-2 FME Cabinet Stocked	500 lb (226 kg)	36" x 24" x 42" (91 cm x 61 cm x 106 cm)	Pink
AUX2RD	AUX-2 FME Cabinet Stocked	500 lb (226 kg)	36" x 24" x 42" (91 cm x 61 cm x 106 cm)	Red
AUXXLOR	AUX-XL FME & DROPS Cabinet Stocked	630 lb (285 kg)	48" x 24" x 42" (121 cm x 61 cm x 106 cm)	Orange
AUXXLPK	AUX-XL FME & DROPS Cabinet Stocked	630 lb (285 kg)	48" x 24" x 42" (121 cm x 61 cm x 106 cm)	Pink
AUXXLRD	AUX-XL FME & DROPS Cabinet Stocked	630 lb (285 kg)	48" x 24" x 42" (121 cm x 61 cm x 106 cm)	Red
AUXEMPTY	AUX Cabinet Only with Bins, FME / DROPS product not included	545 lb (247 kg)	36" x 24" x 42" (91 cm x 61 cm x 106 cm)	Orange
AUXPKEMPTY	AUX Cabinet Only with Bins, FME / DROPS product not included	545 lb (247 kg)	36" x 24" x 42" (91 cm x 61 cm x 106 cm)	Pink

Supreme FME Cabinets

Supreme Series



SUPREMEOR

Features

- Stocked with larger quantities of FME products
- Fork-lift pockets for transportation
- Great for high traffic FME zones
- Contents available on request

Part Numbers	Description	Weight	Dimensions (WxDxH)	Colors
SUPREMEOR	SUPREME FME & DROPS Cabinet Stocked	1725 lb (782 kg)	60" x 36" x 78" (152 cm x 91 cm x 198 cm)	Orange
SUPREMEPK	SUPREME FME & DROPS Cabinet Stocked	1725 lb (782 kg)	60" x 36" x 78" (152 cm x 91 cm x 198 cm)	Pink
SUPREMEMAXOR	SUPREME MAX FME & DROPS Cabinet Stocked	1725 lb (782 kg)	60" x 36" x 78" (152 cm x 91 cm x 198 cm)	Orange
SUPREMEMAXPK	SUPREME MAX FME & DROPS Cabinet Stocked	1725 lb (782 kg)	60" x 36" x 78" (152 cm x 91 cm x 198 cm)	Pink
SUPREMEMAXRD	SUPREME MAX FME & DROPS Cabinet Stocked	1725 lb (782 kg)	60" x 36" x 78" (152 cm x 91 cm x 198 cm)	Red
SUPREMEEMPTY	SUPREME Cabinet Only with Bins, FME / DROPS product not included	1470 lb (667 kg)	60" x 36" x 78" (152 cm x 91 cm x 198 cm)	Orange
SUPREMEFLGOR	SUPREME Flange FME Cabinet Stocked	2322 lb (1053 kg)	60" x 36" x 78" (152 cm x 91 cm x 198 cm)	Orange

Extreme FME Cabinets

Extreme series



EXTREMEOR

Features

- Heavy duty cabinet construction. 12 gauge frame, wider cabinet allowing for additional larger bins
- Larger capacity hanging door bins
- Stocked with larger quantities and wider variety of FME products
- Fork-lift pockets for transportation
- Contents available on request

Part Numbers	Description	Weight	Dimensions (WxDxH)	Colors
EXTREMEOR	Extreme FME & DROPS Cabinet Stocked	710 lb (322 kg)	52" x 30" x 78" (132 cm x 76 cm x 198 cm)	Orange
EXTREMEPK	Extreme FME & DROPS Cabinet Stocked	710 lb (322 kg)	52" x 30" x 78" (132 cm x 76 cm x 198 cm)	Pink

FME COVERS & PROTECTIVE SOLUTIONS

Our comprehensive line of FME (Foreign Material Exclusion) covers is designed to safeguard critical components and systems across industrial, construction, and maintenance environments. From our durable **200 Denier Pipe and Tube Covers**, offering lightweight yet resilient protection, to **Vented Pipe Covers** that allow airflow while preventing debris intrusion, each product ensures equipment integrity and personnel safety. **Magnetic Covers** enable quick, reusable sealing on metal surfaces, while **Tarps and Weld Covers** shield sensitive areas from sparks, dust, and weather elements. For demanding environments, our **High-Temperature Covers** provide reliable defense against heat exposure and contamination. Ideal for power generation, oil & gas, aerospace, and manufacturing applications, our range delivers the unmatched protection, efficiency, and compliance you need to maintain clean, safe, and operationally ready worksites.

The variety of styles available allow the ability to cover almost any piece of vulnerable equipment around most any work task. Even though we're known for carrying stock on many items, we also provide some of the most knowledgeable custom creations in the industry. If you don't find the kind of cover your looking for in this section, please contact us and we can create a custom solution to meet your needs.



Applications

- Turbine Maintenance
- Refueling Outages
- Gas turbine auxiliary systems
- Hydrogen-cooled generators
- Fuel oil handling areas
- Coal handling plants
- Emergency diesel generator rooms
- Chemical & petrochemical plants
- Pharmaceutical manufacturing
- Food & grain processing
- Pulp & paper mills
- Steel and metal processing
- Wellhead control panels
- Pump and compressor stations
- Gas detection system enclosures
- Refinery process units

FME Tube & Pipe Covers



Features

- Round bottom for custom fit
- Adjustable drawstring with metal-free cord lock
- NFPA-701 fire retardant
- Water repellent, reusable and washable

Part Numbers	Description (Diameter x Depth)	UOM	QTY	Color Code
CBFRIT*	1" x 4" (2,5 cm x 10 cm)	PKG	50	FLGR
CBFR1*	1" x 4" (2,5 cm x 10 cm)	PKG	50	OR, PK, RD, FLGR
CBFR2*	2" x 4" (5 cm x 10 cm)	PKG	50	OR, PK, RD, FLGR
CBFR2.9	2.9" x 4" (7 cm x 10 cm)	PKG	50	FLGR
CBFR4	4" x 6" (7 cm x 15 cm)	PKG	30	OR, PK, RD, FLGR
CBFR6	6" x 6" (15 cm x 15 cm)	PKG	30	OR, PK, RD, FLGR
CBFR9	9" x 6" (22 cm x 15 cm)	PKG	30	OR, PK, RD, FLGR
CBFR10	10" x 6" (25 cm x 15 cm)	PKG	30	OR, PK, RD, FLGR
CBFR12	12" x 6" (30 cm x 15 cm)	PKG	20	OR, PK, RD, FLGR
CBFR15	15" x 6" (38 cm x 15 cm)	PKG	20	OR, PK, RD, FLGR
CBFR18	18" x 6" (46 cm x 15 cm)	PKG	20	OR, PK, RD, FLGR
CBFR20	20" x 10" (50 cm x 25 cm)	PKG	20	RD
CBFR24	24" x 10" (61 cm x 25 cm)	PKG	20	OR, PK, RD, FLGR
CBFR30	30" x 10" (76 cm x 25 cm)	PKG	20	OR, PK, RD, FLGR
CBFR38	38" x 10" (96 cm x 25 cm)	PKG	10	OR, PK, RD, FLGR
CBFR44	44" x 12" (112 cm x 30 cm)	PKG	5	OR
CBFR48	48" x 12" (122 cm x 30 cm)	PKG	5	OR
CBFR52	52" x 14" (132 cm x 35 cm)	PKG	5	OR
CBFR56	56" x 14" (142 cm x 35 cm)	PKG	5	OR
CBFR63	63" x 16" (160 cm x 40 cm)	EA	1	RD
CBFR68X12	68" x 12" (173 cm x 30 cm)	EA	1	OR

*Elastic Closure

NOTE

Print reads: FME and the appropriate pipe usage size

Use Part Numbers + Color Code to determine Product Number
OR=Orange, PK=Pink, RD=Red, FLGR=Fluorescent Green

FME Vented Tube & Pipe Covers

Features

- Hook and loop panel reveals mesh ventilation area
- Vented panel allows pressure to equalize
- NFPA-701 fire retardant
- Water repellent
- Round bottom for custom fit
- Adjustable drawstring with metal-free cord lock



Part Numbers	Description (Diameter x Depth)	UOM	Qty	Color Code
CBVFR1*	1" x 4" (2,5 cm x 10 cm)	PKG	50	OR, PK
CBVFR1T*	1" x 4" (2,5 cm x 10 cm)	PKG	50	OR, PK
CBVFR2.9*	2.9" x 4" (7 cm x 10 cm)	PKG	50	OR, PK
CBVFR4	4" x 6" (10 cm x 15 cm)	PKG	30	OR, PK, RD
CBVFR6	6" x 6" (15 cm x 15 cm)	PKG	30	OR, PK, RD
CBVFR9	9" x 6" (22 cm x 15 cm)	PKG	30	OR, PK
CBVFR12	12" x 6" (30 cm x 15 cm)	PKG	20	OR, PK
CBVFR15	15" x 6" (38 cm x 15 cm)	PKG	20	OR, PK
CBVFR18	18" x 6" (46 cm x 15 cm)	PKG	20	OR, PK
CBVFR24	24" x 10" (61 cm x 25 cm)	PKG	20	OR, PK
CBVFR30	30" x 10" (76 cm x 25 cm)	PKG	20	OR, PK
CBVFR38	38" x 10" (96 cm x 25 cm)	PKG	10	OR, PK
CBVFR48	48" x 12" (122 cm x 30 cm)	PKG	10	PK

*Elastic Closure



NOTE

Print reads: FME and the appropriate pipe usage size

Use Part Numbers + Color Code to determine Product Number
OR=Orange, PK=Pink, RD=Red

Economy FME Covers



Features

- Used when FME covers are not expected to be returned
- NFPA-701 fire retardant
- Water repellent, breathable, reuseable and washable
- Adjustable drawstring with metal-free cord lock

Part Numbers	Depth	Fits Pipes	Qty	Color
ECOFR1HDOR*	4" (10 cm)	1" (2,5 cm)	500	Orange
ECOFR2HDOR	4" (10 cm)	2" (5 cm)	400	Orange
ECOFR4HDOR	6" (15 cm)	4" (5 cm)	400	Orange
ECOFR6HDOR	6" (15 cm)	6" (15 cm)	100	Orange
ECOFR10HDOR	6" (15 cm)	10" (25 cm)	100	Orange
ECOFR12HDOR	6" (15 cm)	12" (30 cm)	100	Orange
ECOFR15HDOR	6" (15 cm)	15" (38 cm)	50	Orange
ECOFR18HDOR	6" (15 cm)	18" (46 cm)	50	Orange
ECOFR24HDOR	10" (25 cm)	24" (61 cm)	50	Orange
ECOFR30HDOR	10" (25 cm)	30" (76 cm)	50	Orange
ECOFR38HDOR	10" (25 cm)	38" (96 cm)	50	Orange

*Elastic Closure

NOTE

Print reads: FME and the appropriate pipe usage size

High Temp Covers

Features

- 500°F (260°C) continuous use
- 1000°F (520°C) melting point
- Kevlar drawstring with metal-free cord lock
- Use for welding and on hot pipes



Part Numbers	Description (Diameter x Depth)	UOM	QTY
CBFR2HT	2" X 4" (5 cm x 10 cm) High Temp	EA	1
CBFR4HT	4" X 6" (10 cm x 15 cm) High Temp	EA	1
CBFR6HT	6" X 6" (15 cm x 15 cm) High Temp	EA	1
CBFR10-HT	10" X 6" (25 cm x 15 cm) High Temp	EA	1
CBFR12HT	12" X 6" (30 cm x 15 cm) High Temp	EA	1
CBFR18HT	18" X 6" (46 cm x 15 cm) High Temp	EA	1

High Temp Weld Fit-Up Covers

Features

- Used during the fit-up process to protect against FM intrusion
- One cover spans multiple pipe sizes
- High temperature compatible
- Please contact us with requirements for sizes larger than 36" (91 cm)



WFC28

Part Numbers	Description	UOM	QTY
WFC28	Weld Fit-Up Cover 2" to 8" (5 cm x 20 cm)	EA	1
WFC818	Weld Fit-Up Cover 8" to 18" (20 cm x 46 cm)	EA	1
WFC1824	Weld Fit-Up Cover 18" to 24" (46 cm x 60 cm)	EA	1
WFC2436	Weld Fit-Up Cover 24" to 36" (60 cm x 91 cm)	EA	1

FME Parts & Equipment Tarps



TRP55

Features

- Water repellent, fire retardent NFPA-701, no metal grommets
- Reinforced button holes or webbing straps provide a solution for strapping
- FME Tarps are commonly used over grating to prevent items from falling through and on irregular shaped components

Part Numbers	Description	UOM	QTY	Color Code
TRP48	4 ft x 8 ft (1,2 m x 2,4 m) FME tarp	EA	1	OR
TRP55	5 ft x 5 ft (1,5 m x 1,5 m) FME tarp	EA	1	OR, PK, RD, FLGR
TRP88	8 ft x 8 ft (2,4 m x 2,4 m) FME tarp	EA	1	OR
TRP1010	10 ft x 10 ft (3 m x 3 m) FME tarp	EA	1	OR, PK, RD, FLGR
TRP1020	10 ft x 20 ft (3 m x 6 m) FME tarp	EA	1	OR, PK, RD
TRP2020	10 ft x 20 ft (3 m x 6 m) FME tarp	EA	1	OR, PK, RD, FLGR
TRP55C1	5 ft x 5 ft Parts & Equip Tarp	EA	1	FLGR
TRP510C1	5' ft x 10 ft Parts & Equip Tarp	EA	1	FLGR
TRP1010C1	10 ft x 10 ft Parts & Equip Tarp	EA	1	FLGR

NOTE

Print reads: FME and size

Use Part Numbers + Color Code to determine Product Number
 OR=Orange, PK=Pink, RD=Red, FLGR=Fluorescent Green

Magnetic Tarps

Features

- Water repellant, fire retardant NFPA 701, no metal grommets
- FME Tarps are commonly used over grating to prevent items from falling through and on irregular shaped components
- High-strength embedded ceramic magnets
- Provides hands-free installation
- Attaches securely to carbon steel or stainless steel surfaces
- Allows quick removal and repositioning



Part Numbers	Description	UOM	QTY	Color
MAG19-5X10-75	19.5" x 10.75" (49 cm x 27 cm) Magnetic FME Tarp	EA	1	Orange
MAGTRP58X27	58" x 27" (147 cm x 68 cm) Magnetic FME Tarp	EA	1	Orange
MAG85X22	85" x 22" (216 cm x 56 cm) Magnetic FME Tarp	EA	1	Orange
MAG90X36	90" x 36" (228 cm x 91 cm) Magnetic FME Tarp	EA	1	Orange
MAG120X108	120" x 108" (305 cm x 274 cm) Magnetic FME Tarp	EA	1	Orange
MAG120X240	120" x 240" (305 cm x 610 cm) Magnetic FME Tarp	EA	1	Orange

Economy Tarps

Features

- Water repellant, fire retardant NFPA 701, no metal grommets
- Reinforced button holes or webbing straps provide a solution for strapping
- FME Tarps are commonly used over grating to prevent items from falling through and on irregular shaped components

Part Numbers	Description	UOM	QTY	Color
ECOTRP5X5OR	5 ft x 5 ft (1,5 m x 1,5 m)	PKG	25	Orange
ECOTRP10X10OR	10 ft x 10 ft (3 m x 3 m)	PKG	10	Orange

Printed Griffolyn[®]



RFTX1200FR25

Features

- Puncture/tear resistant
- Anti-static, Fire retardant NFPA-701, weather and contamination resistant
- Internally reinforced polyethylene laminate
- Use this to cover large openings and for hand rail covers/barriers
- When magnet sheets aren't suitable, Griffolyn[®] provides a workable alternative

Part Numbers	Description	UOM	QTY	Color
RFTX1200FR25OR	Griffolyn [®] , Multiple Print FME, 50" (127 cm) wide	ROLL	25 yd	Orange
RFTX1200FROR	Griffolyn [®] , Multiple Print FME, 50" (127 cm) wide	ROLL	100 yd	Orange
RFTX1200FRPK	Griffolyn [®] , Multiple Print FME, 50" (127 cm) wide	ROLL	100 yd	Pink

Magnetic FME Covers



MAG16DIA

Features

- High-strength embedded ceramic magnets
- Provides hands-free installation
- Allows repositioning without loss of holding strength
- Water repellant, fire retardent NFPA-701

Part Numbers	Description	UOM	QTY	Color Code
MAG16DIA	16" (40 cm) Diameter Orange, w/FME Print	EA	1	OR
MAG24DIA	24" (61 cm) Diameter Orange, w/FME Print	EA	1	OR
MAG25DIAV	25" (63 cm) Diameter Red, vented cover w/FME Print	EA	1	RD
MAG66DIAV	66" (168 cm) Diameter Orange, vented cover w/FME Print	EA	1	OR

NOTE

Use Part Prefix Numbers + Color Code to determine Product Number
OR=Orange, RD=Red

FME BARRIERS

FME Barriers are purpose-built protection solutions designed to safeguard people, surfaces, and infrastructure in active work environments and include flame retardant floor coverings as well as drive-over and walk-over drain covers. They providing reliable protection in construction, industrial, and facility settings where safety and access must be maintained.

Engineered for durability and compliance, these barriers help reduce slip, trip, and fire risks while withstanding foot traffic, vehicle loads, and harsh jobsite conditions. Easy to deploy, reposition, and remove, construction safety barriers support efficient workflows while maintaining safety standards across a wide range of applications.

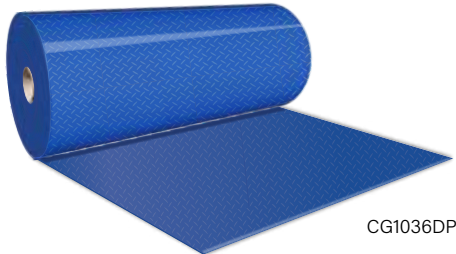
Barrier Applications

- Floor & Finished Surface Protection
- Drain & Opening Protection
- Slip, Trip & Fall Prevention
- Fire & Spark Containment
- Pedestrian & Vehicle Separation
- Dust, Debris & Overspray Control
- Equipment & Infrastructure Protection
- Jobsite Safety & Compliance



Cover Guard[®] Diamond Plate Flame Retardant Floor Covering

CG Series



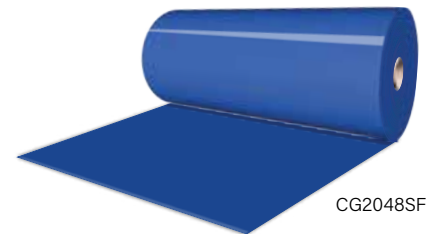
Features

- Durable and waterproof
- Recyclable and reusable
- Puncture and tear resistant
- Easy, labor-saving installation and removal
- Can be cleaned/disinfected in medical applications
- Resistant to most chemicals and solvents

Part Numbers	Description	MIL	UOM	QTY
CG1036DP	Blue Diamond Plate, 36" X 393 ft (91 cm x 120 m)	10	ROLL	1
CG1072DP	Blue Diamond Plate 72" X 393 ft (183 cm x 120 m)	10	ROLL	1
CG1336DP	Blue Diamond Plate, 36" X 360 ft (91 cm x 110 m)	13	ROLL	1
CG1372DP	Blue Diamond Plate 72" X 360 ft (183 cm x 110 m)	13	ROLL	1
CG2536DP	Blue Diamond Plate, 36" X 180 ft (91 cm x 55 m)	25	ROLL	1
CG2572DP	Blue Diamond Plate 72" X 180 ft (183 cm x 30 m)	25	ROLL	1
CG303610SF	Blue Smooth Flat 36" X 100 ft (91 cm x 30 m)	30	ROLL	1
CG4036DP	Blue Diamond Plate 36" X 120 ft (91 cm x 36 m)	40	ROLL	1
CG4072DP	Blue Diamond Plate 72" X 120 ft (183 cm x 36 m)	40	ROLL	1

Cover Guard[®] Smooth Flat Flame Retardant Floor Covering

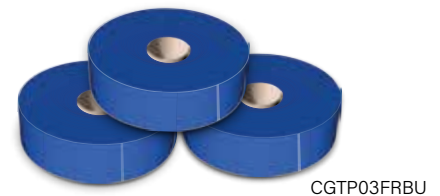
CG Series



Part Numbers	Description	MIL	UOM	QTY
CG2048SF	Blue Smooth Flat 48" X 100 ft (122 cm X 30 m)	20	ROLL	1
CG303610SF	Blue Smooth Flat 36" X 100 ft (91 cm X 30 m)	30	ROLL	1

Cover Guard[®] Flame Retardant Seam Tape

CG Series



Part #	Description	Width	Length	MIL	UOM	QTY
CGTP03FRBU	Flame Retardant Seam Tape, Blue, used with Coverguard Diamond Plate	3" (7,6 cm)	165 ft (50,2 m)	3	ROLL	1

Drive Over & Walk Over Drain Covers

Features

- Fast installation
- Hard tear-resistant top layer
- Withstands repeated use
- High visibility yellow
- Cleans easily
- Chemically resistant

Part Numbers	Description	Shape	Drain Size
DC31212	Drive Over Drain Cover 12" (30 cm) diameter	Round	6" (15 cm)
DC32020	Drive Over Drain Cover 20" (51 cm) diameter	Round	14" (35 cm)
DC3001818	Drive Over Drain Cover 18" x 18" (45 cm x 45 cm)	Square	12" x 12" (30 cm x 30 cm)
DC3012424	Drive Over Drain Cover 24" x 24" (61 cm x 61 cm)	Square	18" x 18" (45 cm x 45 cm)
DC306-5454	Drive Over Drain Cover 54" x 54" (137 cm x 137 cm)	Square	48" x 48" (122 cm x 122 cm)
DC41212	Walk Over Drain Cover 12" (30 cm) diameter	Round	6" (15 cm)
DC42020	Walk Over Drain Cover 20" (51 cm) diameter	Round	14" (35 cm)
DC4001818	Walk Over Drain Cover 18" x 18" (45 cm x 45 cm)	Square	12" x 12" (30 cm x 30 cm)
DC4012424	Walk Over Drain Cover 24" x 24" (61 cm x 61 cm)	Square	18" x 18" (45 cm x 45 cm)
DC43030	Walk Over Drain Cover 30" (76 cm) diameter	Round	24" (61 cm)
DC4033636	Walk Over Drain Cover 36" x 36" (91 cm x 91 cm)	Square	30" x 30 (76 cm x 76 cm)



DC32020



DC3012424

Vinyl Magnetic Sheets



MAGSHT2436

Features

- Easily cut to any size
- A quick solution
- Orange comes with black text
- Red & Pink comes with white text
- Custom print available
- Small sections of sheet can also be used in signs
- Used in: diesel generators, manway openings, breaker openings, turbine maintenance and more...

Part Numbers	Description	UOM	QTY	Color Code
MAGSHT2436	FME Magnetic Sheet- 24" x 36" (61 cm x 91 cm)	EA	1	OR, PK, RD
MAGSHT2436RL	Roll of FME Magnetic Sheet 24" x 25 ft (61 cm X 11 m)	EA	1	OR, PK, RD

NOTE

Use Part Numbers + Color Code to determine Product Number
 OR=Orange, PK=Pink, RD=Red

HDPE FLANGE PROTECTORS & HDPE SHEETS

HDPE Flange Protectors and HDPE Sheets are essential components of effective Foreign Material Exclusion (FME) programs, providing reliable protection for critical flange faces, sealing surfaces, and open connections throughout all project phases. Manufactured from high-density polyethylene (HDPE), these products offer a robust, lightweight, and cost-effective solution to preserve equipment integrity during fabrication, transportation, storage, installation, and maintenance.

HDPE Flange Protectors are specifically designed to fit and secure over flange faces, while HDPE Sheets provide versatile, cut-to-size protection for irregular openings, large-diameter flanges, valve inlets, manways, and custom applications where standard protectors may not be suitable.

Applications

- Oil & gas production
- Power generation facilities
- Chemical and petrochemical processing plants
- Water and wastewater treatment facilities
- Shipbuilding, marine, and offshore installations
- Equipment fabrication, transport, and long-term storage



HDPE Flange Protectors



15068OR

300141618OR

Features

- HDPE flange protectors for flange sizes 6" thru 24" (15 cm thru 61 cm)
- Offers high impact strength and toughness while remaining lightweight
- 150 lb (68 kg) or 300 lb (136 kg) - .0375" (.95 mm) thick, orange in color
- Effectively seals flange faces and bolt holes
- Resistant to most chemicals, oils, solvents, and moisture
- Reusable and cost effective

Part Numbers	Rating	Diameter	Flange Size	QTY	Color
15068OR	150 lb (68 kg)	13.5" (34 cm)	6", 8" (15 cm, 20 cm)	1	Orange
1501012OR	150 lb (68 kg)	19" (48 cm)	10", 12" (25 cm, 30 cm)	1	Orange
1501416OR	150 lb (68 kg)	23.5" (60 cm)	14", 16" (35 cm, 40 cm)	1	Orange
1501820OR	150 lb (68 kg)	27.5" (70 cm)	18", 20" (45 cm, 50 cm)	1	Orange
15024OR	150 lb (68 kg)	32" (81 cm)	24" (61 cm)	1	Orange
30068OR	300 lb (136 kg)	15" (38 cm)	6", 8" (15 cm, 20 cm)	1	Orange
3001012OR	300 lb (136 kg)	20.5" (52 cm)	10", 12" (25 cm, 30 cm)	1	Orange
300141618OR	300 lb (136 kg)	28" (71 cm)	14", 16", 18" (35 cm, 40 cm, 45 cm)	1	Orange
3002024OR	300 lb (136 kg)	36" (91 cm)	20", 24" (50 cm, 61 cm)	1	Orange

HDPE Sheets

Part Numbers	Size	Qty	Color
HDPE44OR	4 x 4 ft (1,2 m x 1,2 m)	1	Orange
1401300	4 x 8 ft (1,2 m x 2,4 m)	1	Orange

Specialty Flange Protectors

Part Numbers	Description	Qty	Color
FLG24COMBGE7FAOR	HDPE flange cover for GE 7FA Manway (24")	1	Orange
FLGM501FTPHATOR	HDPE flange cover for M501F Top Hat (round)	1	Orange
FLGM501GMNWAYOR	HDPE flange cover for M501G Manway (round)	1	Orange
FLGM501GTPHATOR	HDPE flange cover for M501G Top Hat	1	Orange
FLGMW501FMNWAYOR	HDPE flange cover for MW501F Manway (oval)	1	Orange
FLGW501D5MNWAYOR	HDPE flange cover for W501D5 Manway (oval)	1	Orange

FME CAPS

FME Caps are designed to protect exposed openings, threads, ports, and connections from foreign material intrusion during maintenance, fabrication, transport, and storage. Covering a wide range of applications—including flanges, pipes, electrical components, tubing, vents, and general utilities—these caps help maintain system cleanliness, prevent damage, and support compliance with Foreign Material Exclusion protocols in controlled environments.

Available in multiple styles, sizes, materials, and high-visibility color options, FME Caps provide a secure, temporary seal that is easy to install and remove without tools. From small-diameter electrical and tube caps to large NPT pipe and flange protector caps, this category delivers comprehensive coverage across industrial, power generation, and outage operations.

FME Caps Applications

- Cover open flanges and pipe ends
- Protect threaded ports and fittings
- Seal electrical and conduit openings
- Cap tubes, hoses, and small lines
- Block debris during transport and storage
- Support cleanliness in FME zones



Flange Protector Caps

Features

- Low density polyethylene
- Secure snap-on fit
- No fasteners required
- Provides surface protection
- Chemical & moisture resistant



150 lb Series Part Numbers	300 lb Series Part Numbers	Nominal Pipe Size	Qty	Color
1501/2OR	3001/2OR	1/2" (1,5 cm)	100	Orange
1503/4OR	3003/4OR	3/4" (2 cm)	100	Orange
1501OR	3001OR	1" (2,5 cm)	100	Orange
15011/4OR	30011/4OR	1-1/4" (3,2 cm)	100	Orange
15011/2OR	30011/2OR	1-1/2" (3,8 cm)	100	Orange
1502OR	3002OR	2" (5 cm)	100	Orange
15021/2OR	30021/2OR	2-1/2" (6,3 cm)	100	Orange
1503OR	3003OR	3" (7,6 cm)	75	Orange
15031/2OR	30031/2OR	3-1/2" (8,9 cm)	50	Orange
1504OR	3004OR	4" (10 cm)	50	Orange
1506OR	3006OR	6" (15 cm)	40	Orange
1508OR	3008OR	8" (20 cm)	30	Orange
15010OR	30010OR	10" (25 cm)	14	Orange
15012OR	30012OR	12" (30 cm)	10	Orange

Vent Caps



Features

- Act as physical barrier to protect vent from debris such as dust, sand and metal shavings.
- Serve as a visible, inspectable
- Reduce need for temporary covers during outages
- Help meet quality and audit standards.

Part Numbers	Size	NPT	Qty	Material
AV38	Aluminum Vent Cap	3/8" (.95 cm)	1	Aluminum
TY20SS	Mushroom Vent Cap	1/2" (1,5 cm)	1	Zinc plated cast iron
TY21SS	Mushroom Vent Cap	3/4" (2 cm)	1	Zinc plated cast iron
TY22SS	Mushroom Vent Cap	1" (2,5 cm)	1	Zinc plated cast iron
TY22SSMSH	Mushroom Vent Caps with S/S Mesh	1" (2,5 cm)	1	Zinc plated cast iron

Utility Caps

C SERIES



Features

- Straight in shape with thin walls makes them lightweight and able to fit snugly over cylindrical features like threaded connectors or exposed screw ends
- Flanged lip or rim that makes them easier to grip, install, and remove Low-Density Polyethylene (LDPE) Material
- Good resistance to moisture and mild chemicals, flexibility without cracking
- Suitable for general-purpose use during storage and shipment

Part Numbers	Size	Qty	Color
C2	1/2" (1,5 cm)	1500	Red
C8	3/4" (2 cm)	1000	Red
C12	1" (2,5 cm)	500	Red
C18	1-1/4" (3,2 cm)	300	Red
C20	1-3/8" (3,49 cm)	300	Red
C24	1-1/2" (3,8 cm)	200	Red
C26	1-3/4" (4,4 cm)	200	Red
C28	2" (5 cm)	100	Red
C30	2-1/4" (5,7 cm)	100	Red
C32	2-1/2" (6,3 cm)	100	Red
C34	2-3/4" (7 cm)	100	Red
C36	3" (7,6 cm)	100	Red

Electrical Caps

EC, EZ, VCF & VC Series

Features

- Standard caps for tubing ends and connectors
- EC are rugged and simple for threaded parts and cylindrical surfaces
- EZ for tool-free removal and snug protection - repeated use and FME processes
- VCF for broad coverage and easy installation/removal for general protection of tubing ends and NPT threads



Part Numbers	Style	Size	Quantity	Color Code
EC10	ELECTRICAL CAP	5/8" (1,58 cm)	100	OR, PK, RD
EC12	ELECTRICAL CAP	3/4" (2 cm)	100	OR, PK, RD
EC16	ELECTRICAL CAP	1" (2,5 cm)	100	OR, PK, RD
EC18	ELECTRICAL CAP	1-1/8" (2,85 cm)	100	OR, PK, RD
EC20	ELECTRICAL CAP	1-1/4" (3,2 cm)	100	OR, PK, RD
EC24	ELECTRICAL CAP	1-1/2" (3,8 cm)	100	OR, PK, RD
EC32	ELECTRICAL CAP	2" (5 cm)	100	OR, PK, RD
EZ24012	TUBE CAP	1/4" (.63 cm)	100	OR, PK, RD
EZ36512	TUBE CAP	3/8" (.95 cm)	100	OR, PK, RD
EZ49012	TUBE CAP	1/2" (1,5 cm)	100	OR, PK, RD
EZ52112	TUBE CAP	.521" (1,32 cm)	100	OR, PK, RD
EZ67712	TUBE CAP	.677" (1,71 cm)	100	OR, PK, RD
VC25016PK	TUBE CAP	1/4" (.63 cm)	100	Pink
VC37516PK	TUBE CAP	3/8" (.95 cm)	100	Pink
VC50016PK	TUBE CAP	1/2" (1,5 cm)	100	Pink
VC75016PK	TUBE CAP	3/4" (2 cm)	100	Pink
VC100016PK	TUBE CAP	1" (2,5 cm)	100	Pink
VC131224PK	TUBE CAP	1.312" (3,33 cm)	600	Pink
VC187516	TUBE CAP	1.875" (4,76 cm)	100	PK, RD
VC237516PK	TUBE CAP	2.375" (6 cm)	100	Pink
VCF25016OR	TUBE CAP	1/4" (.63 cm)	100	OR, RD
VCF37516OR	TUBE CAP	3/8" (.95 cm)	100	OR, RD
VCF50016OR	TUBE CAP	1/2" (1,5 cm)	100	OR, RD
VCF75016OR	TUBE CAP	3/4" (2 cm)	100	OR, RD
VCF100016	TUBE CAP	1" (2,5 cm)	100	OR, RD
VCF12516	TUBE CAP	1/8" (.32 cm)	100	OR, RD
VCF131224OR	TUBE CAP	1.312" (3,33 cm)	100	OR, RD
VCF200016RD	TUBE CAP	2" (5 cm)	100	Red
VCF237516OR	TUBE CAP	2.375" (6 cm)	100	Orange
VCF250016OR	TUBE CAP	2-1/2" (6,3 cm)	100	Orange

NOTE Use Part Numbers + Color Code to determine Product Number
OR=Orange, PK=Pink, RD=Red

NPT Caps

NPT SERIES



NPT1/4OR

NPT5OR

Features

- Protects threaded pipe ends
- Rigid structure provides extra protection
- Locking ridge holds cap firmly on pipe end prevents foreign materials during transit and storage
- Low density polyethylene

Part Numbers	Nominal Pipe Size	Cap Inner Diameter	Quantity	Color
NPT1/4OR	1/4" (.63 cm)	0.516" (1,74 cm)	100	Orange
NPT3/8OR	3/8" (.95 cm)	0.66" (1,67 cm)	100	Orange
NPT1/2OR	1/2" (1,5 cm)	0.84" (2,13 cm)	100	Orange
NPT3/4OR	3/4" (2 cm)	1.045" (2,65 cm)	100	Orange
NPT1OR	1" (2,5 cm)	(3,27 cm)	100	Orange
NPT11/4OR	1-1/4" (3,2 cm)	1.66" (4,2 cm)	100	Orange
NPT11/2OR	1-1/2" (3,8 cm)	1.91" (4,85 cm)	100	Orange
NPT2OR	2" (5 cm)	2.378" (6 cm)	100	Orange
NPT21/2OR	2-1/2" (6,3 cm)	2.86" (7,26 cm)	50	Orange
NPT3BLU	3" (7,6 cm)	3.47" (8,8 cm)	30	Blue
NPT3OR	3" (7,6 cm)	3.47" (8,8 cm)	30	Orange
NPT31/2OR	3-1/2" (8,9 cm)	4" (10 cm)	25	Orange
NPT4OR	4" (10 cm)	4.5" (11,43 cm)	20	Orange
NPT5OR	5" (12 cm)	5.63" (14,3 cm)	20	Orange
NPT6OR	6" (15 cm)	6.64" (16,86 cm)	20	Orange
NPT8OR	8" (20 cm)	8.67" (22 cm)	20	Orange
NPT10BK	10" (25 cm)	10.705" (27,2 cm)	25	Black
NPT12BK	12" (30 cm)	12.679" (32,2 cm)	18	Black
NPT14BK	14" (38 cm)	14" (38 cm)	15	Black
NPT16BK	16" (40 cm)	16" (40 cm)	15	Black
NPT18BK	18" (45 cm)	18" (45 cm)	10	Black
NPT20BK	20" (50 cm)	20" (50 cm)	15	Black
NPT22BK	22" (56 cm)	22" (56 cm)	10	Black
NPT24BK	24" (61 cm)	24" (61 cm)	8	Black

Threaded Caps

Features

- Low density polyethylene
- Threaded style, Swage fitting



Part Numbers	Description	Qty	Color Code
SWGTC4	CD-4, 1/4" (.63 cm) Threaded Cap to fit B-400-6	100	OR, PK, RD
SWGTC6	CD-6, 3/8" (.95 cm) Threaded Cap to fit B-600-6	100	OR, PK, RD
SWGTC8	CD-8, 1/2" (1.5 cm) Threaded Cap to fit B-810-6	100	OR, PK, RD
SWGTC12RD	CD-12, 3/4" (2 cm) Threaded Cap to fit B-1210	100	Red
SWGTC16RD	CD-12, 3/4" (2 cm) Threaded Cap to fit B-1210	100	Red

NOTE

Use Part Numbers + Color Code to determine Product Number
OR=Orange, PK=Pink, RD=Red

FME PLUGS & SPONGES

- Foreign Material Exclusion & Protection
- Safety & Risk Mitigation
- Accountability & Compliance
- Application Flexibility

FME Plugs and Sponges are engineered to prevent foreign material intrusion, protect critical systems, and support safe maintenance practices across industrial, power generation, nuclear, oil & gas, aerospace, and manufacturing environments. This category includes a full range of mechanical plugs and compressible sponge solutions designed to seal, block, identify, and control openings of varying sizes, pressures, and applications.

Designed for both standard and specialized applications, FME Plugs and Sponges deliver a consistent approach to system protection, visual control, and operational confidence—supporting best practices wherever foreign material exclusion is critical.



NPT Threaded Plugs

Features

- Low density polyethylene
- Threaded style, swage fitting



P18

Part Numbers	Description	Qty	Color Code
P18	NPT Threaded Plug, 1/8" (.31 cm)	100	OR, PK, RD
P48	NPT Threaded Plug, 1/2" (1,5 cm)	100	RD
P68H	NPT Threaded Plug, 3/4" (2 cm)	100	PK
P88H	NPT Threaded Plug, 1" (2,5 cm)	100	PK, RD
P108	NPT Threaded Plug, 1-1/4" (3,2 cm)	100	PK

Tether Ready NPT Threaded Plugs

Features

- Molded D-ring into the top to allow for sign attachments
- Manufactured of HDPE with low halogens
- Squared off head to allow for wrench installations



S014

Part Numbers	Description	Qty	Color
S014	NPT Threaded Plug with loop, 1/4" (.635 cm)	100	Red
S014PK	NPT Threaded Plug with loop, 1/4" (.635 cm)	100	Pink
S038	NPT Threaded Plug with loop, 3/8" (.95 cm)	100	Red
S038PK	NPT Threaded Plug with loop, 3/8" (.95 cm)	100	Pink
S050	NPT Threaded Plug with loop, 1/2" (1,5 cm)	100	Red
S050PK	NPT Threaded Plug with loop, 1/2" (1,5 cm)	100	Pink
S034	NPT Threaded Plug with loop, 3/4" (2 cm)	100	Red
S034PK	NPT Threaded Plug with loop, 3/4" (2 cm)	100	Pink
S100	NPT Threaded Plug with loop, 1" (2,5 cm)	100	Red
S100PK	NPT Threaded Plug with loop, 1" (2,5 cm)	100	Pink
S114	NPT Threaded Plug with loop, 1-1/4" (3,2 cm)	100	Red
S114PK	NPT Threaded Plug with loop, 1-1/4" (3,2 cm)	100	Pink
S112	NPT Threaded Plug with loop, 1-1/2" (3,8 cm)	100	Red
S112PK	NPT Threaded Plug with loop, 1-1/2" (3,8 cm)	100	Pink

Threaded Plugs



Features

- **Low-Density Polyethylene:** flexible, impact-resistant, and chemically resistant
- **Screws** securely into internal threads to seal or protect them
- **Fits** over or into swaged tube ends to protect during handling, storage, or finishing
- **Good** for moisture, dust, and debris protection
- **Resistant** to cracking under pressure or vibration

Part Numbers	Description	Qty	Color Code
SWGTP4	PDE-4, 1/4" (0,63 cm) Threaded Plug to fit B-400-6	100	OR, PK, RD
SWGTP6	PDE-6, 3/8" (0,95 cm) Threaded Plug to fit B-600-6	100	OR, PK, RD
SWGTP8	PDE-8, 1/2" (1,5 cm) Threaded Plug to fit B-810-6	100	OR, PK, RD
SWGTP12RD	PDE-12, 3/4" (2 cm) Threaded Plug to fit B-1210-6	100	Red
SWGTP16RD	PDE-16, 1" (2,5 cm) Threaded Plug to fit B-1610-6	100	Red

NOTE

Use Part Numbers + Color Code to determine Product Number
OR=Orange, PK=Pink, RD=Red

Flared Threaded Plugs



Features

- **Designed** Protection for JIC threads and flare seats
- **Prevention** of damage and contamination during storage or transport
- **Flexible** and resistant to moisture and most chemicals
- **Corrosion-free** performance

Part Numbers	Description	Qty	Color
PD60	LDPE Threaded Plug Flared JIC fitting 9/16" (1,42 cm) - 18	1000	Red
PD80	LDPE Threaded Plug Flared JIC fitting 3/4" (1,9 cm) - 16	500	Red
PD160	LDPE Threaded Plug Flared JIC fitting 1-5/16" (2,38 cm) - 12	200	Red

Safe-T-Sponges[®]

Features

- Compressible
- Quick installation and removal
- Low halogens
- Won't lose air pressure like inflatable bladders
- Remains in position indefinitely
- Withstands sandblasting
- Reusable
- Insert and withdraw through manhole openings
- Sponges should be ordered at one size above the pipe they will be used on. For example, a 20 inch pipe would require a 22 inch sponge for best fit
- Custom sizes and shapes are commonly created for special applications like L.P. and H.P. extraction ports, tube and seal openings, turbine oil applications and more



LPL Safe-T-Sponge[®]

Features

- Open cell polyurethane foam
- Protective Nomex[®]/Kevlar[®] top that aids in puncture protection, flame retardancy and ease of cleaning
- Can be used as a FME device and purging backstop
- Do not exceed 500°F/260°C



Part Numbers	Size	Quantity
LPL1	1" (2,5 cm)	25
LPL1.25	1-1/4" (3,2 cm)	25
LPL1.5	1-1/2" (3,8 cm)	25
LPL2	2-1/4" (5,7 cm)	25
LPL2.5	2-3/4" (7 cm)	25
LPL3	3-1/4" (8,25 cm)	25
LPL4	4-1/4" (10,8 cm)	25

**LPL Series 1IN - 4IN can be used in both Nuclear & Non Nuclear Applications.*

Original Safe-T-Sponge® & Laminated Safe-T-Sponge®

PL & LPL



PL5, PL7, PL16



LPL5, LPL8, LPL20

Original Safe-T-Sponge® Part Numbers	Laminated Safe-T-Sponge® Part Numbers	Size	Quantity
PL5	LPL5	5" (12 cm)	10
PL6	LPL6	6" (15 cm)	10
PL7	LPL7	7" (17 cm)	10
PL8	LPL8	8" (20 cm)	10
PL9	LPL9	9" (22 cm)	10
PL10	LPL10	10" (25 cm)	10
PL12	LPL12	12" (30 cm)	1
PL14	LPL14	14" (35 cm)	1
PL16	LPL16	16" (40 cm)	1
PL18	LPL18	18" (45 cm)	1
PL20	LPL20	20" (50 cm)	1
PL22	LPL22	22" (55 cm)	1
PL24	LPL24	24" (61 cm)	1
PL26	LPL26	26" (66 cm)	1
PL28	LPL27	27" (68 cm)	1
PL30	LPL28	28" (71 cm)	1
PL32	LPL30	30" (76 cm)	1
PL34	LPL32	32" (81 cm)	1
PL36	LPL34	34" (86 cm)	1
PL38	LPL36	36" (91 cm)	1
PL40	LPL38	38" (96 cm)	1
PL42	LPL40	40" (100 cm)	1
PL43	LPL42	42" (107 cm)	1
PL44	LPL44	44" (111 cm)	1
PL46	LPL46	46" (116 cm)	1
PL48	LPL48	48" (122 cm)	1
	LPL50	50" (127 cm)	1

Square Safe-T-Sponges[®]



SQ2

Original Safe-T-Sponge [®] Part Numbers	Laminated Safe-T-Sponge [®] Part Numbers	Square Size	Quantity
SQ2	-	2 ft x 2 ft (,6 m x ,6 m)	1
-	LSQ3	3 ft x 3 ft (1 m x 1 m)	1
SQ4	LSQ4	4 ft x 4 ft (1,2 m x 1,2 m)	1

High Temp Safe-T-Sponges[®]

Features

- Special, halogen free high temp foam
- Protective Nomex[®]/Kevlar[®] bag completely encapsulates the sponge.
- Handle and labeling use hi-temp components
- Can be used in hot-work areas and as a purging backstop
- Do not exceed 500°F/260°C



Part Numbers	Description	Size	Quantity
HT-6	Safe-T-Sponge [®] , High Temperature	6" (15 cm)	1
HT-10	Safe-T-Sponge [®] , High Temperature	10" (25 cm)	1

Inflatable Bag Plugs

INFBP Series



INFBP110

Features

- Inflatable plugs have the capacity to deflate and fall into equipment. Tethers prevent this from happening
- Qwik fit plugs are much like bag plugs except they will hold up to 10 lb (4.5 kg) of pressure in the pipe
- Make sure you identify this internal plug with an appropriate flagging device found in the Barrier Identification section
- Polyester cover protects the bladder and reinforces it in the case of accidental over-inflation
- Temp. Rating: 160°F (71°C), optional Nitrile 180°F (82°C) or Chlorobutyl 220°F (104°C)

Part Numbers	Description	Size	Quantity
INFBP103	Poly Cover	3" (8 cm)	1
INFBP108	Poly Cover	8" (20 cm)	1
INFBP110	Poly Cover	10" (25 cm)	1
INFBP112	Poly Cover	12" (30 cm)	1
INFBP116	Poly Cover	16" (40 cm)	1
INFBP118	Poly Cover	18" (45 cm)	1
INFBP120	Poly Cover	20" (50 cm)	1
INFBP124	Poly Cover	24" (61 cm)	1
INFBP130	Poly Cover	30" (76 cm)	1
INFBP142	Poly Cover	42" (107 cm)	1

Nitrile Inflatable Bag Plugs

INFBP Series

Part Numbers	Description	Size	Quantity
NFBPN102	Nitrile bladder/poly cover	2" (5 cm)	1
INFBPN104	Nitrile bladder/poly cover	4" (10 cm)	1
INFBPN106	Nitrile bladder/poly cover	6" (15 cm)	1
INFBPN108	Nitrile bladder/poly cover	8" (20 cm)	1
INFBPN110	Nitrile bladder/poly cover	10" (25 cm)	1
INFBPN112	Nitrile bladder/poly cover	12" (30 cm)	1
INFBPN114	Nitrile bladder/poly cover	14" (35 cm)	1
INFBPN120	Nitrile bladder/poly cover	20" (50 cm)	1
INFBPN122	Nitrile bladder/poly cover	22" (55 cm)	1
INFBPN124	Nitrile bladder/poly cover	24" (61 cm)	1

Aluminum Expansion Plugs

Features

- 70% lighter than steel plugs
- Durable cast aluminum
- Maintenance free
- Easy expansion, non corrosive
- Special sizes available
- Temp. Rating: 160°F (71°C), optional Nitrile 180°F (82°C) or 450°F (232°C) (Viton, Silicon)



INFBP103, INFBP110, BINFBP116, INFBP120

Part numbers	Description	Size Unexpanded	Size Expanded	Stem	Weight
AP01.50	Aluminum Expansion Plug, 1- 1/2"	1.456" (3,698 cm)	1.889" (4,798 cm)	0.50" (1,27 cm)	0.5 lb (0,226 kg)
AP02.00	Aluminum Expansion Plug, 2"	1.889" (4,798 cm)	2.440" (6,197 cm)	0.50" (1,27 cm)	0.5 lb (0,226 kg)
AP02.50	Aluminum Expansion Plug, 2-1/2"	2.440" (6,197 cm)	2.775" (7,048 cm)	0.50" (1,27 cm)	0.5 lb (0,226 kg)
AP03.00	Aluminum Expansion Plug, 3"	2.795" (7,099 cm)	3.425" (8,699 cm)	0.50" (1,27 cm)	0.75 lb (,453 kg)
AP03.50	Aluminum Expansion Plug, 3-1/2"	3.503" (8,897 cm)	3.700" (9,398 cm)	0.50" (1,27 cm)	0.75 lb (,453 kg)
AP04.00	Aluminum Expansion Plug, 4"	3.779" (9,598 cm)	4.133" (10,497 cm)	0.50" (1,27 cm)	0.75 lb (,453 kg)
AP04.50	Aluminum Expansion Plug, 4-1/2"	4.215" (10,706 cm)	4.724" (11,998 cm)	0.50" (1,27 cm)	0.75 lb (,453 kg)
AP05.00	Aluminum Expansion Plug, 5"	4.842" (12,298 cm)	5.393" (13,698 cm)	0.50" (1,27 cm)	1.5 lb (,680 kg)
AP06.00	Aluminum Expansion Plug, 6"	5.900" (14,986 cm)	6.550" (16,637 cm)	0.50" (1,27 cm)	1.5 lb (,680 kg)
AP07.00	Aluminum Expansion Plug, 7"	6.550" (16,637 cm)	7.300" (18,542 cm)	1.00" (2,54 cm)	3.2 lb (1,451 kg)
AP08.00	Aluminum Expansion Plug, 8"	7.700" (19,558 cm)	8.550" (21,717 cm)	1.00" (2,54 cm)	3.4 lb (1,542 kg)
AP09.00	Aluminum Expansion Plug, 9"	8.700" (22,098 cm)	9.550" (24,257 cm)	1.00" (2,54 cm)	3.9 lb (1,769 kg)
AP10.00	Aluminum Expansion Plug, 10"	9.200" (23,368 cm)	10.250" (26,035 cm)	1.00" (2,54 cm)	4.5 lb (2,041 kg)
AP11.00	Aluminum Expansion Plug, 11"	10.300" (26,162 cm)	11.200" (28,448 cm)	1.00" (2,54 cm)	4.9 lb (2,222 kg)
AP12.00	Aluminum Expansion Plug, 12"	11.350" (28,829 cm)	12.450" (31,623 cm)	1.00" (2,54 cm)	6.7 lb (3,039 kg)
AP14.00	Aluminum Expansion Plug, 14"	13.800" (35,052 cm)	15.100" (38,354 cm)	1.00" (2,54 cm)	11 lb (4,989 kg)
AP15.00	Aluminum Expansion Plug, 15"	14.350" (36,449 cm)	15.800" (40,132 cm)	1.00" (2,54 cm)	11.3 lb (5,125 kg)
AP16.00	Aluminum Expansion Plug, 16"	15.600" (39,624 cm)	17.00" (43,18 cm)	1.00" (2,54 cm)	13.8 lb (6,259 kg)
AP18.00	Aluminum Expansion Plug, 18"	17.450" (44,323 cm)	19.250" (48,895 cm)	1.00" (2,54 cm)	17 lb (7,711 kg)
AP20.00	Aluminum Expansion Plug, 20"	19.150" (48,641 cm)	20.650" (52,451 cm)	2.00" (5,08 cm)	28 lb (12,700 kg)
AP21.00	Aluminum Expansion Plug, 21"	20.650" (52,451 cm)	22.100" (56,134 cm)	2.00" (5,08 cm)	30 lb (13,607 kg)
AP24.00	Aluminum Expansion Plug, 24"	23.550" (59,817 cm)	25.500" (64,77 cm)	2.00" (5,08 cm)	33 lb (14,968 kg)
AP27.00	Aluminum Expansion Plug, 27"	26.250" (66,675 cm)	27.700" (70,358 cm)	2.00" (5,08 cm)	44 lb (19,958 kg)
AP36.00	Aluminum Expansion Plug, 36"	34.500" (87,630 cm)	36.800" (93,472 cm)	2.00" (5,08 cm)	96 lb (43,544 kg)

*Plug with Tether Loop

Nylon Expansion Plugs



S1.00, VS2.50, SS1.50

Features

- 20% lighter than metal
- Shatter-proof, corrosive resistant
- Easily cleanable
- Easy expansion
- Temp Rating: 160°F (71°C); optional Nitrile 180°F (82°C) 300°F (148°C) (Viton, Silicone)

Part numbers	Description	Nominal Size	Size Unexpanded	Size Expanded	Weight
SS050	Nylon Expansion Plug, solid stem 1/2"	0.50" (1,27 cm)	0.490" (1,244 cm)	0.600" (1,524 cm)	0.25 lb (0,112 kg)
SS075	Nylon Expansion Plug, solid stem 3/4"	0.75" (1,905 cm)	0.740" (1,879 cm)	0.900" (2,286 cm)	0.25 lb (0,112 kg)
SS100	Nylon Expansion Plug, solid stem 1"	1.00" (2,54 cm)	0.975" (2,476 cm)	1.200" (3,048 cm)	0.25 lb (0,112 kg)
SS125	Nylon Expansion Plug, solid stem 1-1/4"	1.25" (3,175 cm)	1.225" (3,111 cm)	1.450" (3,683 cm)	0.25 lb (0,112 kg)
SS15	Nylon Expansion Plug, solid stem 1-1/5"	1.50" (3,81 cm)	1.480" (3,759 cm)	1.750" (4,445 cm)	0.25 lb (0,112 kg)

Part numbers	Description	Nominal Size	Size Unexpanded	Size Expanded	Weight
VS050	Nylon Expansion Plug, vented stem 1/2"	0.50" (1,270 cm)	0.49" (1,245 cm)	0.60" (1,524 cm)	0.25 lb (0,112 kg)
VS075	Nylon Expansion Plug, vented stem 3/4"	0.75" (1,905 cm)	0.74" (1,880 cm)	0.90" (2,286 cm)	0.25 lb (0,112 kg)
VS1.00	Nylon Expansion Plug, vented stem 1"	1.0" (2,540 cm)	0.975" (2,489 cm)	1.200" (3,048 cm)	0.25 lb (0,112 kg)
VS125	Nylon Expansion Plug, vented stem 1-1/4"	1.25" (3,175 cm)	1.225" (3,124 cm)	1.450" (3,683 cm)	0.25 lb (0,112 kg)
VS150	Nylon Expansion Plug, vented stem 1-1/2"	1.50" (3,810 cm)	1.480" (3,759 cm)	1.750" (4,445 cm)	0.25 lb (0,112 kg)
VS200	Nylon Expansion Plug, vented stem 2"	2.00" (5,080 cm)	1.930" (4,902 cm)	2.360" (6,00 cm)	0.25 lb (0,112 kg)
VS250	Nylon Expansion Plug, vented stem 2-1/2"	2.50" (6,350 cm)	2.400" (6,096cm)	2.760" (7,106 cm)	0.25 lb (0,112 kg)
VS300	Nylon Expansion Plug, vented stem 3"	3.00" (7,620 cm)	2.870" (7,289 cm)	3.310" (8,407 cm)	0.33 lb (0,149 kg)
VS400	Nylon Expansion Plug, vented stem 4"	4.0" (10,160 cm)	1.889" (4,798 cm)	2.440" (6,197 cm)	0.5 lb (0,226 kg)
VS500	Nylon Expansion Plug, vented stem 5"	5.0" (12,700 cm)	2.440 in (6,197 cm)	2.775" (7,048 cm)	1.0 lb (0,453 kg)
VS600	Nylon Expansion Plug, vented stem 6"	6.0" (15,240 cm)	5.500" (13,97 cm)	6.290" (15,976 cm)	1.0 lb (0,453 kg)

Conical Drain Plugs

Features

- Removable
- Non-mechanical - just plug in drain
- Durable polyurethane



DP2

Part Numbers	Description	Size (Diameter x Height)	Quantity
DP2	Conical Drain Plug	2" x 4.75" (5 cm x 12,06 cm)	1
DP3	Conical Drain Plug	3" x 5" (7,6 cm x 12 cm)	1
DP4	Conical Drain Plug	4" x 5.75" (10 cm x 14,6 cm)	1
DP6	Conical Drain Plug	6" x 5.5" (15 cm x 13,97)	1

Socket Plugs

Features

- Low density polyethylene
- Designed to fit into a socket fitting



V23

Part Numbers	Description	Size	Quantity	Color Code
V23	Socket Plug	1/2" (1,5 cm)	100	OR, RD
V31	Socket Plug	3/4" (2 cm)	100	OR, RD
V42	Socket Plug	1" (2,5 cm)	100	OR, RD
V53	Socket Plug	1-1/4" (3,2 cm)	100	OR, RD
V57	Socket Plug	1-1/2" (3,8 cm)	100	OR, RD
V68	Socket Plug	2" (5 cm)	100	OR, RD

NOTE

Use Part Numbers + Color Code to determine Product Number
OR=Orange, RD-Red

FME TETHERS

FME Tethers and Retention Systems are engineered to secure tools, personal items, and jobsite essentials in environments where foreign material intrusion and dropped objects present serious safety and operational risks. These products support structured FME programs and controlled work practices across power generation, nuclear and non-nuclear facilities, oil & gas, aerospace, and industrial maintenance operations.

Manufactured from durable, job-ready materials and available in high-visibility FME colors, these systems are offered in breakaway, retractable, coil, cinching, snap-hook, and EZ Clean configurations. Features such as no-metal construction, dual attachment points, locking anchors, and VersaClamp compatibility allow users to meet site-specific safety requirements while minimizing snag hazards and workflow disruption.

Applications

- Dropped Object Prevention
- Foreign Material Exclusion (FME)
- PPE & Personal Item Retention
- Identification Badge & Credential Management
- Camera, Dosimetry & Electronic Device Retention
- Confined Space & Elevated Work Safety
- Jobsite Accountability & Compliance



Badge Clips

Features

- Easily attaches to clothing, TLDs, EDs, Neck Lanyards and ID badges
- No metal, easy to clean
- VersaClamp[®] can be used to replace metal binder and paper clips (holds 30+ sheets of paper)
- VersaClamp[®] is patented: US Patent No. D699,100



Part Numbers	Description	Quantity	Color Code
TETHCSM	Badge Clip, 3" (7.6 cm) Tether w/ 1 VersaClamp	25	OR, PK
TETHCCSM	Badge Clip, 3" (7.6 cm) Tether w/ Dual VersaClamps	25	OR, PK
TETHCRSM	Badge Clip, 3" (7.6 cm) Tether w/ Rope Clip & 1 VersaClamp	25	OR, PK
TETHC	Badge Clip, 6" (15 cm) Tether w/ 1 VersaClamp	25	OR, PK, BK
TETHCC	Badge Clip, 6" (15 cm) Tether w/ Dual VersaClamps	25	OR, PK, BK
TETHCR	Badge Clip, 6" (15 cm) Tether w/ Rope Clip & 1 VersaClamp	25	OR, PK, BK
TETHCRRD	Badge Clip, 6" (15 cm) Dual Tether w/ 2 Rope Clips & 1 VersaClamp	25	OR, PK, BK
TETHCD	Badge Clip Dual Tether w/ 1 VersaClamp	25	OR, BK
TETHCDOF	Badge Clip, Offset Dual Tether w/ 1 VersaClamp	25	OR, PK
TETHCRDOFOR	Badge Clip, Offset Dual Tether w/ 1 Rope Clip & 1 VersaClamp	25	Orange
TETHCRRDOFOR	Badge Clip, Offset Dual Tether w/ 2 Rope Clip & 1 VersaClamp	25	Orange
BDGSTRPLPSM	Badge Clip, Loop 3" (7.6 cm)	1000	OR, PK
BDGSTRPLP	Badge Clip, Loop 6" (15 cm)	1000	OR, PK, BK

NOTE

Use Part Numbers + Color Code to determine Product Number
OR=Orange, PK=Pink, BK=Black

VersaClamp Badge Straps

Part Numbers	Description	Quantity	Color Code
VCLAMPBDGRL100	VersaClamp Badge Strap, Releasable w/ dual strap option	100	Orange
VCLAMPBDGRL500	VersaClamp Badge Strap, Releasable w/ dual strap option	500	Orange
VCLAMPBDGRLBL500	VersaClamp Badge Strap, Releasable w/ dual strap option	500	Blue
VersaClamp	VersaClamp Only	1	Black
Versaclamp1K	VersaClamp Only	1000	Black
Versaclamp500	VersaClamp Only	500	Black

Neck Lanyards



NLPR1934WOR , NLPR1934WPK

Features

- A perfect solution to promote FME as giveaways during in-processing
- All tethers come with a safety breakaway feature
- Colored text with black background
- All plastic - no metal components
- Rubber O-Ring with side release buckles



NL24MB3X5



NL24RSPCLBK



NL24RSBK

Part Numbers	Description	Qty	Color
NLPR1934WOR	Breakaway w/ dual clips, FME FOCUS ON PREVENTION	50	Black/Orange
NLPR1934WPK	Breakaway w/ dual clips, FME FOCUS ON PREVENTION	50	Black/Pink
NL24MB3X5	Rubber w/ 3" x 5" (7,6 cm x 12 cm) Mesh Bag Breakaway	1	Black/Orange
NL24MB5X8	Rubber w/ 5" x 8" (12 cm x 20 cm) Mesh Bag Breakaway	1	Black/Orange
NL24RSBK	Rubber w/ Retention Slider	1	Black
NL24RSCLSMBK	Rubber w/ Retention Slider & Small Badge Strap	1	Black
NL24RSPBK	Rubber w/ Pen Holder Retention Slider	1	Black
NL24RSPCLBK	Rubber w/ Pen Holder Retention Slider, Coils & Cups	1	Black
NL24RSPRETBK	Rubber w/ Pen Holder Retention Slider & Retractor	1	Black

Safety Tethers

Features

- Tether will release, not break apart
- Attach one end to the tether and the other end to an attachment point
- Camera tether is adjustable to the user's wrist (one size fits all)
- Fits any camera with tether slot



CAMLANEZ

Part Numbers	Description	Quantity	Color Code
TETHBR	Safety Tether, Breakaway	10	OR, PK, RD
CAMLAN	Camera Tether - Orange	10	OR
CAMLANEZ	EZ Clean Lanyard, Camera	10	OR, PK

NOTE

Use Part Numbers + Color Code to determine Product Number
OR=Orange, PK=Pink, RD=Red

Dosimetry/Retractable Leash

Features

- Prevents phones, ID badges, TLD's, ED's, etc. from becoming falling objects
- Slide rope clips through manufacturer's hole
- Easy cleaning tether with excellent coil memory



CC5PHSNPOR

Part Number	Description	Quantity	Color Code
CC5PHSNPOR	Cell Phone / Dosimetry Leash, Retractable Lanyard w/ swivel snap hook & rope clip	25	OR

Bottle & Can Pouches

Image Coming Soon

Features

- For spray bottles, water bottles, aerosol cans, and more
- Form fitting neoprene design and includes carabiner
- Install from the side for easy access and tight securing

Part Numbers	Description	Diameter	Depth	Rating
HLDRBCSM	Small Bottle Holder with Carabiner	3-1/2" (8,9 cm)	7" (17 cm)	1.5 lb (.68 kg)
HLDRBCLG	Large Bottle/Can Holder w/ Carabiner	4" (10 cm)	7.5" (19 cm)	2.5 lb (1,13 kg)

Glove Holders



PPECSOR

Features

- Keep gloves and earplugs and safety glasses at an arm's reach
- Reduce costs of lost PPE
- Attach to any convenient location
- US Patent No.9,375,074

Part Prefix Number	Description	Quantity	Color Code
PPECS	PPE Caddy Glove Holder	50	OR, PK
PPECPOR	PPE Caddy Glove Holder w/ Pouch	50	Orange

NOTE

Use Part Numbers + Color Code to determine Product Number
OR=Orange, PK=Pink

Glasses Retainers

Features

- Keeps safety glasses snug when working
- 100% cotton
- Rests comfortably on your neck when not in use



Part Numbers	Description	Quantity	Color Code
ERETLGRED	Eyeglass Retainers for Regular Frames	100	Red
ERETRCBOR	Eyeglass Retainers for Large Frames	100	Orange
ERETRCHTVANOR	Eyeglass Retainers for Regular Frames, w/ TVAN FME BEGINS WITH ME	1	Orange
ERETRCBTVANOR	Eyeglass Retainers for Large Frames,w/ TVAN FME BEGINS WITH ME	1	Orange
ERETRCH	Eyeglass Retainers for Regular Frames, w/ FME BEGINS WITH ME	100	OR, PK, RD
ERETRDBM	Eyeglass Retainers, Dual Breakaway	100	Red

NOTE

Use Part Numbers + Color Code to determine Product Number
 OR=Orange, PK=Pink, RD=Red

Hardhat Tethers



LNHYHRD



EZLNHYHRDCLMTL-R



EZLNHYHRDCLOR

Features

- Secures hard hat to a garment or harness
- Comfortable alternative to irritating chin straps
- Storage clip included to prevent clamp degradation

Part Numbers	Description	Quantity	Color Code
LNHYHRD	Patented Hard Hat Tether, No Metal	100	OR, PK, RD, LG
LNHYHRDOR-10	Patented Hard Hat Tether, No Metal	10	OR
LNHYHRDRD-R	Patented Hard Hat Tether, No Metal	1	RD
LNHYHRDFMEPKNOCL	Patented Hard Hat Tether, No Metal	100	PK
EZLNHYHRDCL	EZ Clean Hard Hat Lanyard No Metal, Coil	100	OR, PK
EZLNHYHRDCLOR-10	EZ Clean Hard Hat Lanyard No Metal, Coil	10	Orange
EZLNHYHRDAD	EZ Clean Hard Hat Lanyard No Metal, Detachable w/Locking Anchor	100	OR
EZLNHYHRDWBAN	EZ Clean Hard Hat Lanyard No Metal, w/Locking Anchor	100	OR, PK
EZLNHYHRDWBANOR10	EZ Clean Hard Hat Lanyard No Metal, w/Locking Anchor	10	OR
EZLNHYHRDWBANPK10	EZ Clean Hard Hat Lanyard No Metal, w/Locking Anchor	10	PK
EZLNHYHRDCLMTL-R	EZ Clean Hard Hat Lanyard w/ Metal Crimps	1	OR
EZLNHYHRDCLMTL	EZ Clean Hard Hat Lanyard w/ Metal Crimps	100	OR

NOTE

Use Part Numbers + Color Code to determine Product Number
 OR=Orange, PK=Pink, RD=Red, LG=Green

Floating Pens

Features

- Unique design prevents accidental disassembly
- Minimal parts for FME Zones
- Floats as a standalone (tether-ready) or with tethering option
- Ergonomically designed grip for use with or without glove
- Available in high vis. orange or red
- Black ink, medium point



PENFMEOR

Part Numbers	Description	Quantity	Color Code
PENFMEOR	FME Floating Pen, w/Tether Loop	50	Orange
PENFMEPLOR	FME Floating Pen, w/Tether Loop w/o spring	25	Orange
PENFMETETHOR	FME Floating Pen, w/ Floating Tether	25	Orange
PENFMETETHPLOR	FME Floating Pen, w/ Floating Tether w/o spring	25	Orange
105-C103-I02-PA03	FME PEN, Red housing, Black ink	50	Red

Pen & Pencil Tethers



Features

- Fits most pens, pencils, permanent markers
- Can be used for small tools and pen lights
- Tubular knit fabric

Part Numbers	Description	Quantity	Color Code
BNCLP1	Pen & Pencil Tether for binders/clipboards, Heat Shrink Style	100	OR, PK, RD
BNCLP3	Pen & Pencil Tether for binders/clipboards, Heat Shrink Style	100	OR, PK
LYATT1	Pen & Pencil Tether, Heat Shrink Style	100	OR, PK, RD
LYATT3	Pen & Pencil Tether, for Marker/Highlighter, Heat Shrink Style	100	PK, RD
LYBN1CP	1 pc. Of LYATT1 and 1 Pc. Of BNCLP1 and 2 heat shrink rings as 1 bag assembly	100/Bags	OR
TETHCAPPEN	Tether Cap for Pens	25	OR
TETHCAPSHRP	Tether Cap for Sharpies	25	OR

NOTE

Use Part Numbers + Color Code to determine Product Number
OR=Orange, PK=Pink, RD=Red

FME FASTENERS

FME Fasteners are designed to secure materials, cables, and components while reducing the risk of foreign material loss in controlled environments. These products support effective FME programs by improving visibility, containment, and retrieval during maintenance, construction, and inspection activities.

This category includes hook-and-loop fasteners, floating and embossed floating cable ties, natural floating cable ties, and specialty Tefzel® cable ties. Offered in a range of lengths and tensile strengths, these fasteners support applications from light-duty organization to heavy-duty securement. Floating designs aid recovery in water or open-system environments, while high-visibility colors reinforce accountability and compliance.

Durable, jobsite-ready materials ensure reliable performance without compromising safety—providing a practical, scalable solution for securing temporary and permanent assemblies.

FME Fasteners Applications

- Cable, Hose & Line Management
- Temporary Securement & Organization
- Water, Pit & Open-System Work Zones
- Maintenance & Outage Operations
- Confined Space & Elevated Work Environments
- Jobsite Safety, Accountability & Compliance



Hook & Loop Fasteners

CS & OWS Series



CS2IOR

Features

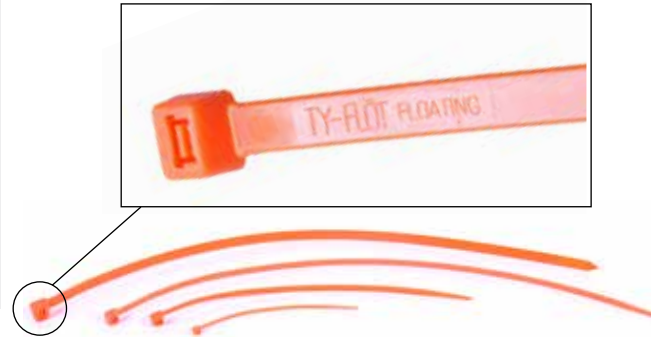
- Reusable and durable
- Quick and easy installation
- Floating
- Will not pinch or abrade wires
- Replaces tape / minimizes waste
- Tapered end
- Cable straps are often used as a non-tape method of securing protective clothing at the ankles
- One wrap straps are often used to secure security badges

Part Numbers	Wrap Style	Length	Width	Head Width	Max Bundle Diameter	Quantity
CS2IOR	Cinch	8" (20 cm)	0.75" (2 cm)	1.1" (2,8 cm)	2.0" (5 cm)	100
CS4IOR	Cinch	14.5" (36 cm)	0.75" (2 cm)	1.1" (2,8 cm)	4.0" (10 cm)	100
CS5IOR	Cinch	18.0" (45 cm)	0.75" (2 cm)	1.1" (2,8 cm)	5.0" (12 cm)	100
CS8IOR	Cinch	25.0" (1,5 cm)	0.75" (2 cm)	1.1" (2,8 cm)	8" (20 cm)	100
OWS6OR	Wrap	6" (15 cm)	0.5" (1,5 cm)	0.75" (2 cm)	1.3" (3,3 cm)	100
OWS8OR	Wrap	8" (20 cm)	0.5" (1,5 cm)	0.75" (2 cm)	1.9" (4,8 cm)	100
OWS145OR	Wrap	14.5" (36 cm)	0.5" (1,5 cm)	0.75" (2 cm)	4.0" (10 cm)	100
OWS145X75OR	Wrap	14.5" (36 cm)	0.75" (2 cm)	1.25" (3,2 cm)	4.0" (10 cm)	100
OWS24X75OR	Wrap	24" (61 cm)	0.75" (2 cm)	1.25" (3,2 cm)	7" (17 cm)	100

Embossed Floating Cable Ties

Features

- Embossed with the word FLOATING on each tie to eliminate the confusion with non floating ties
- Low halogens / heavy metals
- More economical than nylon floating cable ties
- No metal



Part Numbers	Length	Bundle Diameter	Tensile Strength	Qty	Color
TY411FLCPP3	4" (10 cm)	.8" (2,03 cm)	11 lb (4,98kg)	1000	Orange
TY411FLCPP3PK	4" (10 cm)	.8" (2,03 cm)	11 lb (4,98kg)	1000	Pink
TY830FLCPP3	8" (20 cm)	1.94" (4,9 cm)	30 lb (13,6 kg)	1000	Orange
TY830FLCPP3PK	8" (20 cm)	1.94" (4,9 cm)	30 lb (13,6 kg)	1000	Pink
TY1430FLCPP3	14.6" (37 cm)	4" (10 cm)	30 lb (13,6 kg)	1000	Orange
TY1430FLCPP3PK	14.6" (37 cm)	4" (10 cm)	30 lb (13,6 kg)	1000	Pink
TY1450FLCPP3	14.6" (37 cm)	4" (10 cm)	50 lb (22,6)	500	Orange
TY1450FLCPP3PK	14.6" (37 cm)	4" (10 cm)	50 lb (22,6)	500	Pink
TY40XHDCPP3	40" (100 cm)	12" (30 cm)	250 lb (113 kg)	50	Orange
TY40XHDCPP3PK	40" (100 cm)	12" (30 cm)	250 lb (113 kg)	50	Pink

Natural Floating Cable Ties

Features

- Low halogens
- More economical than nylon floating cable ties
- No metal
- Water absorption: 04% ASTM D 570



Part Numbers	Length	Bundle Diameter	Tensile Strength	Qty	Color
TY08STDCPP3	8" (20 cm)	1.75" (4,4 cm)	50 lb (22,6)	1000	Orange
TY08HDCPP3	8.4" (21,3 cm)	1.8" (4,5 cm)	110 lb (49,9 kg)	250	Orange
TY14STDCPP3	14.5" (36,8 cm)	4" (10 cm)	40 lb (18 kg)	500	Orange

Tefzel Cable Ties



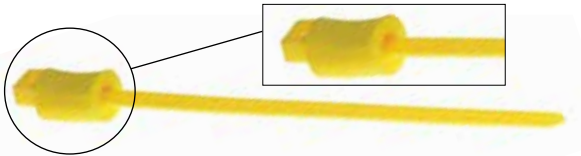
TY1450TZM

Features

- Resists: Chemicals, Gamma Radiation, UV, Extreme Temperatures
- ROHS compliant
- UL Flame Rating 94 V-O chemicals, gamma radiation, UV, extreme temperatures

Part Numbers	Length	Tensile Strength	Qty	Color
TY1450TZM	14.6" (37,1 cm)	50 lb (22,6)	1000	Blue
TY14120TZC	14.6" (37,08 cm)	120 lb (54,5 kg)	100	Blue

Floating Cable Ties



Features

- No metal fastening barb
- Low halogens and heavy metals

Part Numbers	Length	Tensile Strength	Qty	Color
SM1PLT2S2	7" (17 cm)	50 lb (22,6)	100	Orange
SM1PLT3S3	7.4" (18,8 cm)	50 lb (22,6)	100	Red
S1PLT2I	8" (20 cm)	40 lb (18 kg)	100	Natural White
S1PLT2I3	8" (20 cm)	40 lb (18 kg)	100	Orange
S1PLT2I4	8" (20 cm)	40 lb (18 kg)	100	Yellow
S1PLT3I4	11.4" (28,9 cm)	40 lb (18 kg)	100	Yellow
SL2PLT4S6	14.5" (36,8 cm)	50 lb (22,6)	100	Blue
SL2PLT4S	14.5" (36,8 cm)	50 lb (22,6)	100	Natural White
SL2PLT4S2	14.5" (36,8 cm)	50 lb (22,6)	100	Red
SL2PLT4S4	14.5" (36,8 cm)	50 lb (22,6)	100	Yellow
L1PLT4H3	14.5" (36,8 cm)	120 lb (54,5 kg)	100	Orange
L1PLT4H2	14.5" (36,8 cm)	120 lb (54,5 kg)	100	Red
L1PLT4H4	14.5" (36,8 cm)	120 lb (54,5 kg)	100	Yellow
SL2PLT5S3	17.5" (44,5 cm)	50 lb (22,6)	100	Orange
L3PLT6LH	20" (50 cm)	120 lb (54,5 kg)	100	Natural White
L3PLT9LH	30.5" (77,4 cm)	120 lb (54,5 kg)	100	Natural White
TY361203	36" (91 cm)	120 lb (54,5 kg)	50	Orange
TY361203FL*	36" (91 cm)	120 lb (54,5 kg)	50	Orange

*Tens Strength 120lbs w/2L1 Floats

NOTE Not for extended use underwater (see our Embossed or Natural Floating Ties for extended underwater usage)

FME ACCESSORIES

Alternative FME Items are designed to support proactive foreign material prevention by reducing loose objects, improving organization, and enhancing visibility during maintenance, inspection, and outage activities. These products complement traditional FME controls by addressing common sources of foreign material through smarter tools, PPE, and containment solutions.

Included are brushes, FME PPE, deadblow hammers, huck towels, magnetic trays, parts and utility bags, and inspection and retrieval tools. Each item is selected to minimize debris generation, prevent dropped or misplaced components, and improve task efficiency in controlled environments.

High-visibility materials, floating and magnetic features, tether-compatible designs, and debris-reducing construction help keep tools and components contained and recoverable. Together, these solutions provide practical, job-ready alternatives that reinforce FME best practices without disrupting workflow.

FME Accessories Applications

- Tool & Component Containment
- Inspection, Retrieval & Visual Access
- Maintenance, Outage & Turnaround Operations
- Confined Space & Limited-Access Areas
- Elevated Work & Drop-Risk Zones
- Jobsite Safety & FME Compliance



Alternatives to Hand Wire Brushes

Alternative Brushes Series



NYB3720

Features

- Low halogen or halogen-free (documentation available on request)
- Rugged and durable handles
- Perfect for rust, loose paint, threads and general surface conditioning
- Floating (except for 1763080 model)

Part Numbers	Description	Diameter	Bristle Length	Grit	Quantity
NYB3720	Nylon Bristle Brush 3 x 7 Rows, 7 3/16" (18,25 cm) Long (OAL)	.02" (.5 mm)	7/16" (1,1 cm)	N/A	100
NYB41440	Nylon Bristle Brush 4 x 19 Rows, 13 3/4" (35 cm) Long (OAL)	.04" (1 mm)	1" (2,5 cm)	N/A	12
1763080	Abrasive Nylon Bristle	.055" (1,4 mm)	1" (2,5 cm)	80	12
SC352680	Abrasive Nylon Bristle Brush 10" (20 cm) Long (OAL)	.05" (1,27 mm)	3/4" (1,9 cm)	80	12

FME PPE



TETHEP



072911

Features

- Full face shield with hook and loop band
- Packaged in tinted plastic zip locks
- Conforms to OSHA and the Centers for Disease Control recommendations and requirements for eye and face protection
- Anti-fog coating and film, optical grade
- Conspicuously identified as floating

Part Numbers	Description	Quantity
072911	Floating Face Shield, Disposable w/ ID- All clear packaging removed	100
TETHEP	Tethered Earplugs	100

Zero Shot Dead Blow Hammers

Features

- Unique patented design allows internal parts to be contained and FME accountable
- Available in 2 or 3 lb (.9 kg or 1,36 kg) head weight
- 14" (35 cm) Length with heavy duty poly urethane handle
- High visibility green
- Available with vibration resistant tether shackle



HMRDBSHFR2

Part Numbers	Description	Head Weight	Qty
HMRDBSHFR2	2 lb (.9 kg) Dead Blow Hammer Shot Free	2 lb (.9 kg)	1
HMRDBSHFR2SHK	2 lb (.9 kg) Dead Blow Hammer Shot Free with Anti-Vibration Shackle	2 lb (.9 kg)	1
HMRDBSHFR3	3 lb (1.36 kg) Dead Blow Hammer Shot Free	3 lb (1.36 kg)	1
HMRDBSHFR3SHK	3 lb Dead Blow Hammer Shot Free with Anti-Vibration Shackle	3 lb (1.36 kg)	1

Huck Towels

Features

- Adaptable to any tool tether
- Prevent dropped rags in Rx Cavity or SFP
- 100% Cotton



HCKFL1525OR

Part Numbers	Description	Size	Quantity	Color Code
HCK1525OR	Huck Towel	15" x 25" (38 cm x 63 cm)	50	Orange
HCKBH1525OR	Huck Towel w/ Button Hole	15" x 25" (38 cm x 63 cm)	50	Orange
HCKFL1525OR	Huck Towel w/ Float	15" x 25" (38 cm x 63 cm)	50	Orange

Note: Tether not included.

Magnetic & Side Trays



MT3006



MT1006

Features

- Strong magnetic base to secure small parts
- Reduces dropped or lost hardware
- Durable, construction
- Improves organization and visibility

Part Numbers	Description	Size (L x W x H)	Quantity
MT1006	Magnetic Tray, Round	6" (15 cm) Diameter x 1,25" (3,8 cm) deep	1
MST1012	Magnetic Side Tray	12.5" x 4.5" x 1.5" (31,7 cm x 11 cm x 3,8 cm)	1
MT3006	Magnetic Tray, Large w/ Three Magnets	14.25" x 6.25" x 1.5" (36 cm x 15 cm x 3,8 cm)	1

Parts Bags



PB15X17LR

Features

- 400 Denier nylon, fluorescent green
- Print reads "Parts Bag, Size, Do Not Discard"
- Cord-lock styles: Printed in 5 locations, great for keeping control of small articles
- Hook and loop styles: Printed on front and back, great for large articles
- Some uses include, respirators, calibrated instruments, insulation, tools and more

Part Numbers	Description	Size (L x W x H)	Quantity	Color
PB4400FLGN	Parts Bag, Cord-Lock closure	4" Diameter x N/A x 8" (10 cm dia. x NA x 20 cm)	30	FLGN
PB6400FLGN	Parts Bag, Cord-Lock closure	6" Diameter x N/A x 8" (15 cm dia. x NA x 20 cm)	30	FLGN
PB10400FLGN	Parts Bag, Cord-Lock closure	10" Diameter x N/A x 12" (25 cm dia. x NA x 30 cm)	30	FLGN
PB15X17LR	Parts Bag, Hook and Loop closure	15" x 17" x 6" (38 cm x 43 cm x 15 cm)	10	FLGN
PB24X24400FLGN	Parts Bag, Hook and Loop closure	24" x 24" x 7" (61 cm x 61 cm x 17 cm)	10	FLGN
PB30X30400FLGN	Parts Bag, Hook and Loop closure	30" x 30" x 10" (76 cm x 76 cm x 25 cm)	10	FLGN
PB38X55400FLGN	Parts Bag, Hook and Loop closure	38" x 55" x 12" (91 cm x 140 cm x 30 cm)	5	FLGN

Utility Bags

Features

- High-visibility orange mesh construction
- Available with glove clip and/or utility belt clip
- Secures small parts and jobsite essentials
- Mesh design allows quick visual inspection



GUBMG3X5OR

Part Numbers	Description	Size (L x W)	Color
GUBMG3X5OR	Mesh Bag	3" x 5" (7,6 cm x 12 cm)	Orange
GUBMG5X8OR	Mesh Bag w/ Glove Clip	5" x 8" (12 cm x 20 cm)	Orange
GUBMU5X8OR	Mesh Bag w/ Utility Belt Clip	5" x 8" (12 cm x 20 cm)	Orange
GUBMU7X10OR	Mesh Bag w/ Utility Belt Clip	7" x 10" (17 cm x 25 cm)	Orange
GUBMG7X10OR	Mesh Bag w/ Glove Clip	7" x 10" (17 cm x 25 cm)	Orange

Inspection & Retrieval

Features

- Extended reach
- 180 degree swivel
- Flexible models have 360-degree rotation
- Acrylic and polished stainless steel for a shatterproof alternative to glass mirrors
- Ultra-bright LED Lights with shatter-proof lenses
- Heavy duty magnetic ends



TK17690

ACMR17755

945048

Part Numbers	Description	Size (L x W)	Telescoping Length
ACMR17755	Mirror, Acrylic Telescoping	1.75" x 2.5" (4,4 cm x 6,3 cm)	6.5" to 27.5" (16,5 cm to 70 cm)
ACMR17750	Mirror, Acrylic Telescoping	2.25" x 3.6" (5,7 cm x 9 cm)	7.75" to 35.5" (19,6 cm to 90 cm)
ACMR17765	Mirror, Acrylic Telescoping	4" x 6" (10 cm x 15 cm)	8.5" to 37.5" (21,5 cm to 95 cm)
SSMR17150	Mirror, Polished Stainless Steel Telescoping	2" x 3.75" (5 cm x 9,5 cm)	6.75" to 28.5" (17 cm to 72 cm)
TK17690	9-Piece Pick Up Kit, Telescoping Lighted		up to 34.25" (87 cm)
PMG17830	Pick Up Tool, 14 lb, Telescoping		7.25" to 33" (18,4 cm to 84 cm)
945046	PICK UP TOOL, Lighted Flex Claw		22" (55 cm)
945048	PICK UP TOOL, Telescoping, Lighted Flex Claw w/ Magnetic Ends		25" (63 cm)

FME TINTED PLASTICS

FME Plastics are designed to contain, protect, and organize small parts, hardware, and sensitive items while reducing the risk of foreign material loss in controlled environments. These products support disciplined FME practices by providing visible, lightweight containment solutions that are easy to deploy and inspect during maintenance, inspection, and outage activities.

This category includes tinted zip lock bags and V-PAK[®] dosimetry bags offered in a wide range of sizes and configurations. High-visibility tinted plastics improve item identification and accountability, while durable construction helps prevent accidental release. Select styles feature peel-away adhesive backing for secure placement on equipment, carts, or work surfaces.

FME Plastics provide a simple, scalable solution for organizing and protecting components without introducing additional debris—helping teams maintain control, visibility, and compliance in high-risk work zones.

FME Plastics Applications

- **Small Parts & Hardware Containment**
- **Dosimetry & Personal Item Protection**
- **Maintenance, Outage & Turnaround Operations**
- **Confined Space & Limited-Access Areas**
- **Tool Cribs, Carts & Workstations**
- **Jobsite Organization & Compliance**

ty-flot.com



For more information: +1 (800) 466 6385 | us.sales@ty-flot.com

Tinted Garbage Bags

Features

- Transparent material improves ability for visual inspection, enables waste segregation while reducing contamination risk
- Options available in orange, red & green



Part Numbers	Size (L x W)	Gauge	Quantity	Color
GB13184OR	13" x 18" (33 cm x 45 cm)	4 Mil	500	Orange
GB18244GR	18" x 24" (45 cm x 61 cm)	4 Mil	280	Green
GB36608RD	36" x 60" (91 cm x 152 cm)	8 Mil	80	Red
GB38653OR	38" x 65" (96 cm x 165 cm)	3 Mil	80	Orange
GB38656RLOR	38" x 65" (96 cm x 165 cm)	6 Mil	40	Orange
GB40483OR	40" x 48" (100 cm x 122 cm)	3 Mil	105	Orange

Tinted Lay Flat Sleeving

Features

- Prevent expensive hoses and cables from contamination
- Use with a heat sealer for long-term storage of parts
- Available in orange
- Length is 500 ft (152 m)



SLV46

Part Numbers	Description	Size (L x W)	Mil	Color	Quantity
SLV46OR	Roll Lay Flat Sleeving, Tinted	4" x 500 ft (10 cm x 152 m)	6	Orange	1 Roll
SLV66OR	Roll Lay Flat Sleeving, Tinted	6" x 500 ft (15 cm x 152 m)	6	Orange	1 Roll
SLV86OR	Roll Lay Flat Sleeving, Tinted	8" x 500 ft (20 cm x 152 m)	6	Orange	1 Roll

Tinted Zip lock Bags



GUBMG3X5OR

Features

- Visible when submerged in water
- 4 mil heavy-duty virgin low density polyethylene
- Zip lock closure style
- Translucent (transparent with a tint)
- Available in orange

Part Numbers	Size (L x W)	Quantity
PLY35OR	3" x 5" (7,6 cm x 12 cm)	1000
PLY46OR	4" x 6" (10 cm x 15 cm)	1000
PLY48OR	4" x 8" (10 cm x 20 cm)	1000
PLY58OR	5" x 8" (12 cm x 20 cm)	2000
PLY69OR	6" x 9" (15 cm x 22 cm)	1000
PLY912OR	9" x 12" (22 cm x 30 cm)	1000
PLY1215OR	12" x 15" (30 cm x 38 cm)	600
PLY1318OR	13" x 18" (33 cm x 45 cm)	500
PLY1322OR	13" x 22" (33 cm x 55 cm)	400
PLY1818OR	18" x 18" (45 cm x 45 cm)	250
PLY2424OR	24" x 24" (61 cm x 61 cm)	200
DH1012ADHOR*	10" x 12" (25 cm x 30 cm)	500

*w/Peel Away Adhesive Backing

V-PAK Dosimetry Bags



VP3757

Features

- Eliminate the potential of the wire closure ties becoming FMI by using the V-Pak™
- Hook and loop will float if separated from the bag
- Easily attaches to the loop on protective clothing

Part Numbers	Description	Size (L x W)	Quantity
VP3757	V-PAK Dosimetry Bags, Dual Hook and Loop	3.75" x 7" (9,5 cm x 17 cm)	1000
VP510DV	V-PAK Dosimetry Bags, Dual Hook and Loop	5" x 10" (12 cm x 25 cm)	500

ZONE CREATION & CONTROL

Zone Creation & Control products are designed to clearly define work areas, restrict access, and reinforce Foreign Material Exclusion protocols in controlled and high-risk environments. These solutions provide a structured, highly visible approach to managing people, tools, and activities within designated FME zones.

This category includes hooks and magnets, barricade and floor tapes, decals, signage, ropes, chains, stanchions, wall-mounted barriers, receiving posts, and complete FME monitor kits. Together, these products establish physical and visual boundaries that support consistent zone control and worker awareness.

High-visibility colors, standardized messaging, and modular, retractable systems allow zones to be quickly deployed and adjusted as work conditions change—helping prevent unauthorized entry, reduce foreign material risk, and support compliance throughout maintenance, outage, and inspection operations.



Hooks & Magnets



L TO R: 253035-CARA, MHHH20, MHHH9

Features

- Great for hanging signs
- Carabiner style for hanging heavy items to walls or securing tarps
- Knob versions to hold keys and lightweight items
- Preventing internal devices from becoming foreign material intrusions
- Magnet hooks can be used as an anchor point to attach internal plugs.

Part Numbers	Description	Strength	Diameter
253035	Key Ring w/Magnet,	35 lb (158 kg)	1.18" (3 cm)
253035-CARA	Carabineer w/Magnet,	50 lb (22,6 kg)	1.8" (4,5 cm)
MHHH9	Magnetic Hooks, White	9 lb (4 kg)	1" (2,5 cm)
MHHH14	Magnetic Hooks, White	14 lb (6 kg)	1.5" (3,8 cm)
MHHH20	Magnetic Hooks, White	20 lb (9 kg)	2" (5 cm)

FME Barricade Tape

Features

- Identify zones
- Black text with color background
- Glossy over-laminate for protection and finish
- PVC



Part Numbers	Description	Size	Quantity	Color Code
BT1KFMA	FME Area Tape, 3 mil	3" X 1000 ft (7,62 cm x 304 m)	8 Rolls	OR, PK
BT1KFBAROR	FME Barrier Tape, 3 mil	3" X 1000 ft (7,62 cm x 304 m)	8 Rolls	Orange
BT1KS	FME Barrier Tape, 3 mil	3" X 1000 ft (7,62 cm x 304 m)	8 Rolls	Orange Stripes
BT1KFBZ	FME Buffer Zone Tape, 3 mil	3" X 1000 ft (7,62 cm x 304 m)	8 Rolls	OR, PK, GR
BT1KFZ	FME Zone Tape, 3 mil	3" X 1000 ft (7,62 cm x 304 m)	8 Rolls	OR, PK, RD

NOTE

Use Part Numbers + Color Code to determine Product Number
 OR=Orange, PK=Pink, RD=Red, GR=Green

FME Vinyl Floor Tape

Features

- Identify zones by marking floors or handrails
- Resists abrasions, acids, alkalines, and oils
- Black text with color background
- Glossy over-laminate for protection and finish
- PVC



Part Numbers	Description	Size	Quantity	Color
FLTPFZ1	FME Tape, ZONE 1	3" X 36 yd (7,62 cm x 11 m)	1	OR, PK
FLTPOR	FME Tape, BUFFER ZONE	3" X 36 yd (7,62 cm x 11 m)	1	OR, PK

NOTE

Use Part Numbers + Color Code to determine Product Number
 OR=Orange, PK=Pink

FME & Nuclear Grade Duct Tapes



HMRDBSHFR2

Features

- NUC parts meet ASME NQA1 and NRC 1.38 Orange is not nuclear grade
- NUCTP leaves little or no adhesive residue for up to six months after application
- FME printed tape is lined to allow taking minimal amounts into an FME zone
- Many sites prefer a specially color-themed duct tape for FME use. Red is a good alternative to traditional silver
- Hash marks every foot make it easier to track the amount of duct tape in use

Part Numbers	Description	Size	Color	Qty
NUCTPFME	NUCLEAR DUCT TAPE, FME Printed	2" x 60 yd (5 cm x 55 m)	Red	1
TPFMEOR	PRO DUCT TAPE 120, FME Printed	2" x 60 yd (5 cm x 55 m)	Orange	1

FME Hard Hat Decals & Magnets



DCLGUY



DCLGAL



DCLMONWHT



DCLMONBLK

Features

- A way to identify monitors
- Easy to apply
- Fits anywhere on the hard hat

Part Numbers	Description	Quantity
DCLGAL	FME Hard Hat Decals, FME Gal	1
DCLGUY	FME Hard Hat Decals, FME Guy	1
DCLMONBLK	FME Hard Hat Decals, FME Monitor, Black	1
DCLMONWHT	FME Hard Hat Decals, FME Monitor, White	1
MAG35TFME	FME Magnets, 3" X 5" (7.6 cm x 12 cm) THINK FME	25
MAGTWROR	FME Magnets, THINK FME Tower	25

FME Monitor Vests



FMEVSTROR

Features

- High visibility orange color
- FME Monitor printed over the heart and on the back of the vest
- Lightweight for comfort in high temperature environments

Part Numbers	Vest Size	Chest Size	Color	Qty
FMEVSTROR	Regular	39" - 43" (99 cm - 109 cm)	Orange	1
FMEVESTXLOR	XL	43" - 46" (109 cm - 116 cm)	Orange	1
FMEVEST4XOR	4XL	52" - 55" (132 cm - 140 cm)	Orange	1

FME Monitor Kits



FMEMKIT

Features

- Ideal kit for the FMEM desk
- Contains an array of products to assure proper tethering of tools on the fly
- Lightweight and portable

Part Numbers	Description	Contents
FMEMKIT	FME Monitor Kit	0485002, BNCLP1OR, CARA880SH, DRHDOR, DRSMOR, ERETRCHOR, LNYHRDOR, LYATT1OR, MOL36RFVO, SNPS12OR, TETHEP, TKIT1316, TKIT2630, TKIT3440, TKIT3594, TKIT4047, WCOR
FMEMKITPL	FME Monitor Kit, No Metal Items	0485002, BNCLP1OR, LYATT1OR, DRSMORPL, DRHDORPL, ERETRCHOR, LNYHRDOR, MOL36RFVO, SNPS12PLOR, TETHEP, TC1,TC2, TC3, TC4, TL2PL, TL3PL, TL4PL, TL5PL, KLEVER KUTTER, WCOR

Think FME Posters

Features

- FME posters and signs elevate awareness of FME and can help to create a culture of prevention
- FME Visual Reinforcement poster
- Standardized FME Messaging poster
- Proactive Risk Prevention poster
- All Posters 18" x 24" (45 cm x 61 cm) poster

Part Numbers	Description
PSTR1101	Check Your Feet
PSTR1102	Lanyards Stop Them
PSTR1103	Internal Devices Little Plugs
PSTR1105	Use Approved FME Devices
PSTR1110	Messes Happen
PSTR1111	Retrieval Fly
PSTR1112	What If?
PSTR1113	Easily Breakable?
PSTR1114	When something expensive.
PSTR1115	Empty your Pockets
PSTR1117	FME Game
PSTRSETFME	Set of 11 "Think FME" Posters



PSTR1101



PSTR1110



PSTR1114



PSTR1102



PSTR1111



PSTR1115



PSTR1103



PSTR1112



PSTR1117



PSTR1105



PSTR1113



PSTRSETFME

FME Sign Inserts



Features

- OSHA compliant
- Flip-top for easy installation
- 4 pockets to change out inserts to match zone conditions
- Non-brittle front panel
- Available in orange

Part Numbers	Description	Size	Qty
FMEINS1OR	FME ZONE 1	1.5" x 8" (3,8 cm x 20 cm)	1
FMEINS2OR	FME ZONE 2	1.5" x 8" (3,8 cm x 20 cm)	1
FMEINS3OR	FME BUFFER ZONE	1.5" x 8" (3,8 cm x 20 cm)	1
FMEINS4OR	FME MONITOR	1.5" x 8" (3,8 cm x 20 cm)	1
FMEINS6OR	FME HIGH RISK	1.5" x 8" (3,8 cm x 20 cm)	1
FMEINS7OR	FME LOW RISK	1.5" x 8" (3,8 cm x 20 cm)	1
FMEINSLG1OR	FME	4" x 8" (10 cm x 20 cm)	1

FME Signs



SH8511



SIGNZ10R



SIGN1014SNC

Part Numbers	Description	Size	Quantity
SIGNSS4x4OR	Stop Sign Shape, FME DEVICE INSTALLED WITHOUT THE TAIL	4" x 4" (10 cm x 10 cm)	1
SIGNZ10R	FME ZONE 1, w/Mounting holes	10" x 12" (25 cm x 30 cm)	1
SIGNZ20R	FME ZONE 2, w/Mounting holes	10" x 12" (25 cm x 30 cm)	1
SIGNZ0R	FME ZONE, w/Mounting holes	10" x 12" (25 cm x 30 cm)	1
SIGN1014SNC	FME LEVEL/COMPONENT/AREA, w/Mounting holes	10" x 14" (25 cm x 35 cm)	1
SH8511	Universal Sign Holder	8.5" x 11" (21 cm x 28 cm)	1
MPC	Rope Connector, Detachable		1000
ROPE14OR	Rope, Polypropylene, Diamond Hollow Braid	1/4" (.6 cm) x 1000 ft (305m)	1

FME Stickers



Features

- Use on FME barriers/covers that aren't color themed or don't have FME labels
- FME Exempt stickers are used on items where FME isn't a concern or debris would be obvious

Part Numbers	Description	Size	Quantity	Color Code
ST231OR	FME EXEMPT Stickers, 2" X 3" (5 cm x 7,6 cm) Indoor	2" X 3" (5 cm x 7,6 cm)	1000	OR
ST231PK	FME EXEMPT Stickers, 2" X 3" (5 cm x 7,6 cm) Indoor	2" X 3" (5 cm x 7,6 cm)	250	PK
ST23	FME BARRIER Stickers	2" X 3" (5 cm x 7,6 cm)	250	OR, PK, RD
ST35	FME BARRIER Stickers, 3" X 5"	3" X 5" (7,6 cm x 12 cm)	250	OR, PK, RD
ST35TFME	FME Stickers, 3" X 5" (7,6 cm x 12 cm) THINK FME!	3" X 5" (7,6 cm x 12 cm)	50	OR, PK
STTWOROR	FME Stickers, 3" X 5" (7,6 cm x 12 cm) THINK FME! Tower	3" X 5" (7,6 cm x 12 cm)	50	Orange

NOTE

Use Part Numbers + Color Code to determine Product Number
OR=Orange, PK=Pink, RD=Red

Inventory Labels



Features

- Individually identify similar logged items
- Perforated labels
- Fits standard tape dispenser
- Each roll labeled from 1 to 500

Part Numbers	Description	Quantity	Color
STFMEINV	Inventory Labels	500	Orange

Flagging Device for Plastic Plugs

FME Tail Series

Features

- Stop sign models have matching rope and are OSHA compliant signs
- Often called “tell-tails” or “tattle-tails” these flagging devices make it obvious that a plug is still installed



Part Numbers	Description	Qty	Color Code
FMETAILSS	FME TAIL STOP SIGN w/ 12" (30 cm) Ext. Line	1	OR, PK, RD
FMETAILORG	FME TAIL DEVICE	25	Orange

NOTE

Use Part Numbers + Color Code to determine Product Number
OR=Orange, PK=Pink, RD=Red

FME Flagging Signs

Features

- Prevents FME devices from being left in systems
- OSHA compliant
- Printing on both sides with “FME DEVICE INSTALLED” and contact lines
- Dry-erase compatible, easily clips or cinches to the FME device



HCKFL1525OR

Part Numbers	Description	Size	Rope Length	Color Code
FLG6X5	FME Flagging Sign w/ Extension Line	6" X 5" (15 cm x 12 cm)	15 ft (4,5 m)	OR, PK

NOTE

Use Part Numbers + Color Code to determine Product Number
OR=Orange, PK=Pink

Plastic Chain Stanchions



Part Numbers	Description	Quantity	Color
TFI30017OR	PLASTIC CHAIN, 1-1/2" (3,8 cm)	100 ft (30 m)	Orange
TFI30019PK	PLASTIC CHAIN, 1-1/2" (3,8 cm)	100 ft (30 m)	Pink
TFI30317	S-HOOKS, 1-1/2" (3,8 cm) Chain Link	25	Orange
TFI30319	S-HOOKS, 1-1/2" (3,8 cm) Chain Link	25	Pink
TFI30717	MASTER LINKS, 1-1/2" (3,8 cm)	25	Orange
TFI30719	MASTER LINKS, 1-1/2" (3,8 cm)	25	Pink

15' Retractable Stanchions



Features

- Portable - great for temporary buffer zones
- 40" high and 27 lb (101 cm high and 12 kg)
- Custom text available
- Easily adjoins to the next stanchion

Part Numbers	Description	Custom Text Imprint
TFI321BAOR	15' (4,5 m) Belt Long Span Black Aluminum Stanchion, Orange Belt	Available
TFI321BARDDGR	15' (4,5 m) Belt Long Span Black Aluminum Stanchion, "DANGER KEEP OUT" Red Belt/White Ink	NA
TFI321C1OR	15' (4,5 m) Belt Long Span Powdercoat C1 Aluminum Stanchion, Orange Belt	NA
TFI320PAPC-RD	15' (4,5 m) Belt Long Span Polished Aluminum Stanchion, Red Belt	Available
TFI320SSBL	15' (4,5 m) Belt Long Span Stainless Steel Stanchion, Blue Belt	Available
TFI320SSOR	15' (4,5 m) Belt Long Span Stainless Steel Stanchion, Orange Belt	Available
TFI320SSRD	15' (4,5 m) Belt Long Span Stainless Steel Stanchion, Red Belt	Available
TFI321YAYW	15' (4,5 m) Belt Long Span Yellow Aluminum Stanchion, Yellow Belt	Available
TFI320YABYD	15' (4,5 m) Belt Long Span Yellow Aluminum Stanchion, Black/Yellow (BYD) Belt	NA
TFI321YWYW	15' (4,5 m) Belt Long Span Yellow Aluminum Stanchion, Yellow Belt	Available
TFI321OR	15' (4,5 m) FME Retractable Stanchion, Orange ribbon with Print	NA
TFI321OROR	15' (4,5 m) Retractable Stanchion with Orange Base, Pole & Ribbon, NO PRINT	NA

30' Retractable Stanchions

Features

- Outdoor rated - heavy-duty
- E-Z Back braking system prevents backlash
- High impact polycarbonate
- Heavy gauge aluminum or steel
- Highly portable - easy roll wheels



Part Numbers	Description
PM41230BACAU	30' (9 m) Belt Black Aluminum Stanchion Black Head, "CAUTION DO NOT ENTER" Belt (Yellow/Black Imprint)
PM41230BADGR	30' (9 m) Belt Black Aluminum Stanchion Black Head, "DANGER KEEP OUT" (Yellow Belt/Black Ink)
PM41230BAORCAU	30' (9 m) Belt Black Aluminum Stanchion Black Head, "CAUTION DO NOT ENTER" Belt (Orange/Black Imprint)
PM41230BARD	30' (9 m) Belt Black Aluminum Stanchion Black Head, Red Belt
PM41230BAWH-ME-C	30' (9 m) Retractable Stanchion, Magnetic Belt End, Print Red/White Diagonal Stripes, "DANGER-ARC FLASH" Printed Over
PM41230PAOR	30' (9 m) Belt Polished Aluminum Stanchion Black Head, Orange Belt
PM41230YAAAO	30' (9 m) Belt Yellow Aluminum Stanchion Black Head, "Authorized Access Only" (Red Belt/White Ink) Belt
PM41230YABYD	30' (9 m) Belt Yellow Aluminum Stanchion Black Head, Black/Yellow Diagonal (BYD) Belt
PM41230YACAU	30' (9 m) Belt Yellow Aluminum Stanchion Black Head, "CAUTION DO NOT ENTER" (CAU) Belt
PM41230YARDFME	30' (9 m) Belt Yellow Aluminum Stanchion Black Head, Red "FME" Belt

Wall Mounted Retractable Barriers



Features

- Wall-mounted and magnetic options for quick, space-saving deployment
- Retractable belts extend up to 30 ft (9 m) for flexible zone control
- High-visibility colors and safety messaging for improve awareness
- Durable construction with optional magnetic belt ends

Part Numbers	Description
WM412SB150ORSUB412M	15' (4,5 m) Smooth Black Retractable Barrier-Magnetic Wall mount, Orange Belt
WM412SB15OR	15' (4,5 m) Smooth Black Wall Mount Retractable Stanchion with Orange Belt
WM412SB15ORSUB412MSUBME	15' (4,5 m) Smooth Black Retractable Barrier-Magnetic Wall mount Magnetic Belt End, Orange Belt
WM412SB15RD	15' (4,5 m) Smooth Black Wall Mount Retractable Stanchion, Red Belt
WM412SB15RDSUB412M	15' (4,5 m) Smooth Black Retractable Barrier-Magnetic Wall mount, Red Belt
WM412YW15BYD	15' (4,5 m) Yellow Wall Mount Retractable Stanchion, Black/Yellow (BYD) Belt
WM412SB25BYDSUB412MSUBME	25' (7,6 m)Smooth Black Magnetic Wall Mount Retracta-Belt with Black/Yellow (BYD) Magnetic Belt End
WM412SB30OR	30' (9 m) Black Wall Mount Retractable Stanchion, Orange Belt
WM412SB30ORSUB412M	30' (9 m) Smooth Black Magnetic Wall Mount Retractable Belt, -Orange Belt
WM412SB30RWDSUBME	30' (9 m) Smooth Black Magnetic Wall Mount Barrier, Magnetic Belt End, Print Red/White Diagonal Stripes, "DANGER-ARC FLASH" Printed Over
WM412YW30-BK	30' (9 m) Yellow Wall Mount Retractable Stanchion, Black Belt
WM412YW30BYDSUB412M	30' (9 m) Magnetic Yellow Wall Mount Retractable Stanchion, Black/Yellow (BYD) Belt
WM412YW30-RD	30' (9 m) Yellow Wall Mount Retractable Stanchion, "FME" Red Belt

Receiving Posts

Features

- Portable - Great for temporary buffer zones
- 40" high and 27 lb (101 cm high and 12 kg)
- Custom text available
- Easily adjoins to the next stanchion



Part Numbers	Description
RE	Wall Mount for Standard Belt End Retractable Stanchions
REM	Magnetic Wall Mount Receiving End
TFI301BARCV	Receiving Post Compatible with PM412BA-CAI
TFI301SBRCV	Receiving Post Compatible with PM412BA-CAI

TY-FLÖT®

**BUILT
ON TRUST.**

TY-FLÖT®

Ty-Flot® | A Guardian Brand

To see our entire range of Foreign Material
Exclusion and Dropped Object Prevention
solutions, visit our web site:



ty-flot.com

USA
800 466 6385
us.sales@ty-flot.com

CANADA
800 267 6855
cnd.sales@ty-flot.com